



MYKKE HOFMANN



OUR ESSENCE

We are Mykke Hofmann

ROOTED IN THE BALKAN, BASED IN GERMANY AND COSMOPOLITAN AT HEART. WE RUN A CONTEMPORARY WOMENSWEAR LABEL AND OUR OWN PRODUCTION SITE IN BELGRADE, SERBIA.

WE EXIST TO AMPLIFY WOMEN ON A MISSION,
SO JOIN THE RIDE!



FAIR FASHION

- Production in own facility in Belgrade/Serbia, full control of the working conditions
- Wages are 50% above regulation
- Paid overtime and transportation
- Education for workers, supporting young talents and valuing experience - our production manager is 24 and our oldest team member just turned 68



KEY FACTS

- 100% fair production, 100% sourced in Europe, 100% committed to sustainability
- Desk-to-dinner-to-disco through styling varieties and daywear focus
- Focus on longevity and timeless style

There is a saying that everything we create gets back to us as either poison or food. Our mission is to create the best balance between aesthetics and ethics, and thus give as much beauty and happiness to the world while creating as little harm as possible.



OUR PHILOSOPHY

Our philosophy is based on four pillars:

People, Longevity, Transparency and Respect.

Our small team takes great efforts to ensure our collections create the best balance between design and sustainability.

And when talking about sustainability, we do not focus on the garment itself, but on the entire value chain – starting from the crop and ending with our societal responsibility.

SUSTAINABLE SOURCING

- We only source sustainable fabrics - organic cottons certified with GOTS, tencel, ecovero viscose, recycled polyester and only merino wool which is mulesing free and RWS certified.
- Our fabrics and trimmings are coming exclusively from Portugal, Turkey, Italy, Serbia and Germany
- We try to upcycle every little waste of fabrics as a part of design process



AN OUTTAKE OF OUR WORLD

BAZAR

CENTURY

OUR MANTRA

**Here's to strong women.
May we know them.
May we be them.
May we raise them.**



DESIGN ESSENCE

The design essence of Mykke Hofmann is inspired by Jelena's Hometown Belgrade, a place mixing various architectural and cultural influences. We translate the essence of Belgrade by combining urban style and clean lines with muted natural colors, organic forms, and patterns.

The Fall/ Winter 2022 collection is inspired by the transformation of the Golden Hour to the Lilac hour of the night the time when the sun is setting, and the sky turns purple. Muted earthy and grey tones melt into different shades of violet and visualize the feeling of the hour in which the day fades into darkness.



FALL | WINTER 2022

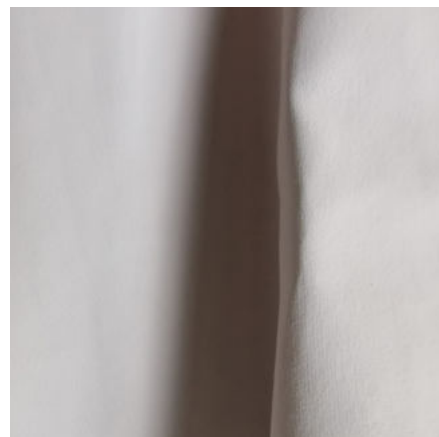




COTTON STRIPE BLACK WHITE
100% ORGANIC COTTON (GOTS)



SOFT FLANNEL GREY CHECKS
95% ORGANIC COTTON (GOTS)
5% CASHMERE



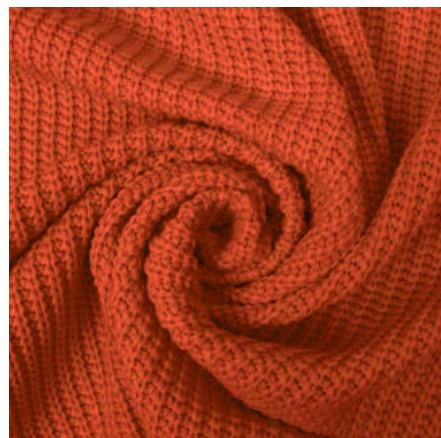
LEATHER JERSEY WIND CHIME
100% ORGANIC COTTON (GOTS)



COTTON POPELINE COLD BLUE
100% ORGANIC COTTON (GOTS)



WOOL FLANNEL DUNE
82% ORGANIC COTTON 15% LINEN 3%
MERINO WOOL



MERINO KNIT ORANGE
100% MERINO WOOL
(RWS + MULESING FREE)



WINTER COTTON MICRO CHECKS
90% ORGANIC COTTON
10% WOOL (GOTS)



VEGAN SILK BODIES MOREL
53% CUPRO 47% ECOVERO VISCOSE

FALL|WINTER 22 FABRICS



TRUE ORGANIC DENIM WHITE
100% ORGANIC COTTON (GOTS)



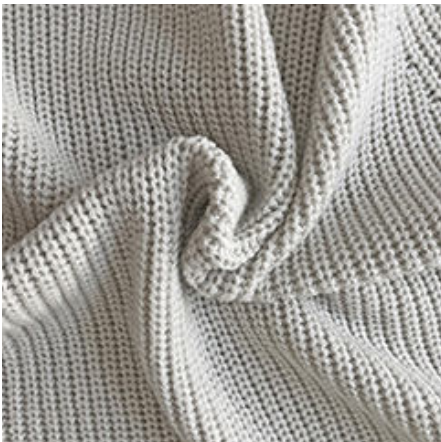
CRÊPE BEIGE MELANGE
65% ECOVERO 30% RECY. POLYESTER
5% ELASTANE (GRS)



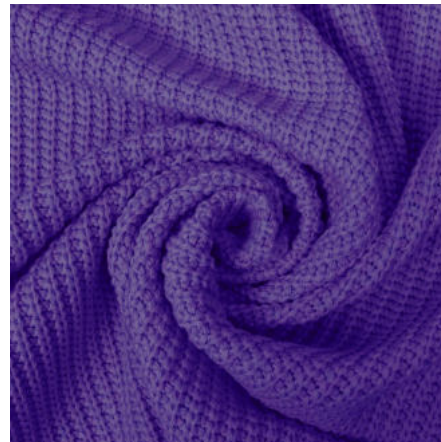
CRÊPE DEEP PURPLE
65% ECOVERO 30% RECY. POLYESTER
5% ELASTANE (GRS)



COTTON STRIPE VIOLET WHITE
100% ORGANIC COTTON (GOTS)



MERINO KNIT OFFWHITE
100% MERINO WOOL
(RWS + MULESING FREE)



MERINO KNIT PURPLE
100% MERINO WOOL
(RWS + MULESING FREE)



VEGAN SILK FLOWER CRUSH
53% CUPRO 47% ECOVERO VISCOSE



VEGAN SILK VIOLET
53% CUPRO 47% ECOVERO VISCOSE





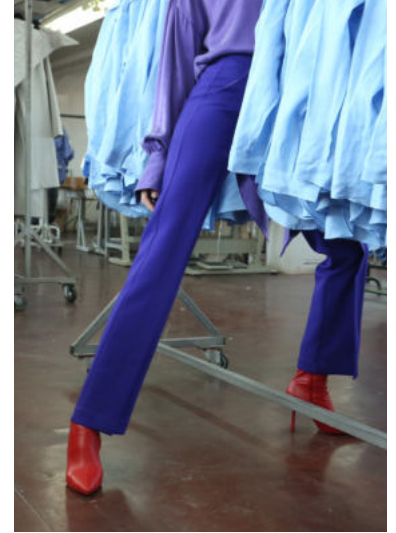
























FW22 STYLES



GAIA | MIMI WIND CHIME



TOM | PINE WIND CHIME



TYRA | RUTH GREY CHECKS | TIARA OFFWHITE



TOM | PINE WIND CHIME



LYLA COLD BLUE | HERO GREY CHECKS



KORA GREY CHECKS



KILINA WIND CHIME



MIMI WIND CHIME



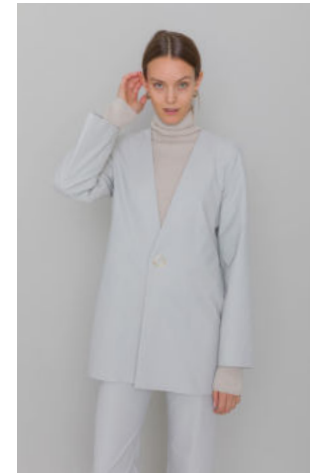
KARLO GREY CHECKS



BENJI | PINE WIND CHIME



LITTA | HERO GREY CHECKS



BENJI WIND CHIME



KEONA VIOLET STRIPES



PALINA PURPLE



LEXA | HERO VIOLET



PAGGI PURPLE | RAUL DEEP PURPLE



KIVO VIOLET STRIPES



PAGGI PURPLE | LEXA | HERO VIOLET



LYLA VIOLET STRIPES | HUBI WHITE



BERTA | HAVVA DEEP PURPLE



KATALINA VIOLET



KEONA | GINNY VIOLET STRIPES



LEXA VIOLET



KARLA VIOLET

FW22 STYLES



KIRA MIRCO CHECKS



KJER FLOWER CRUSH



PALINA ORANGE | KIRA MICRO CHECKS



KANA FLOWER CRUSH



KARLO BEIGE MELANGE | TIARA OFFWHITE



WICKI DUNE | PALINA ORANGE | HAVVA BEIGE



TAYEN | REESE MICRO CHECKS



PAGGI ORANGE | HERO MICRO CHECKS



BILLY DUNE | HAVVA BEIGE



TAYEN | REESE MICRO CHECKS



PALINA ORANGE | KJER FLOWER CRUSH



MAGDA DUNE | PALINA ORANGE | HAVVA BEIGE



TIVI | WHITE



LEXA | RENA BODIES MOREL



LOTTE COLD BLUE | HUBI WHITE



LYONNA BLACK WHITE STRIPE



TIVI | RAVVA WHITE



LYLA | RENA BODIES MOREL



KIRA BLACK WHITE STRIPES



LOTTE COLD BLUE | HUBI WHITE



BELLA | HUBI WHITE



KATALINA BODIES MOREL

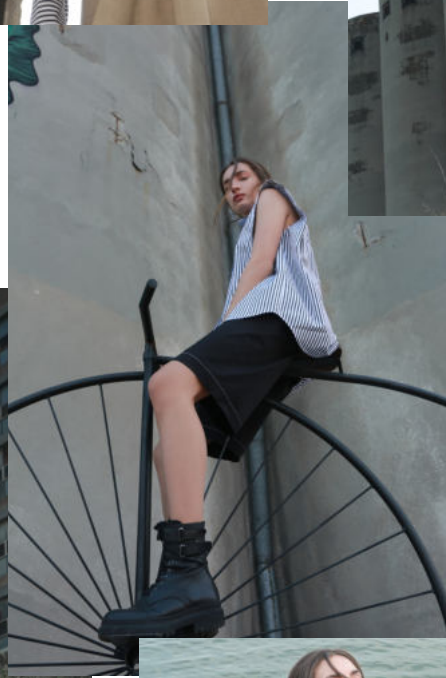
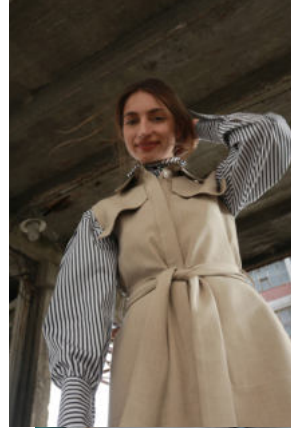


GWEN WHITE



LIS | REESE BLACK WHITE STRIPES

SPRING/SUMMER 22





Keep in touch

PR

press@mykkehofmann.com

SALES

GERMANY | AUSTRIA | SWITZERLAND
info@esperanza-mcalpine.de

REST OF WORLD

sales@mykkehofmann.com

INSTAGRAM & WEB

[@mykke_hofmann](https://www.instagram.com/mykke_hofmann)
www.mykkehofmann.com

MYKKE HOFMANNRAM

Rumfordstraße 30, 80469 Munich | Germany
info@mykkehofmann.com

