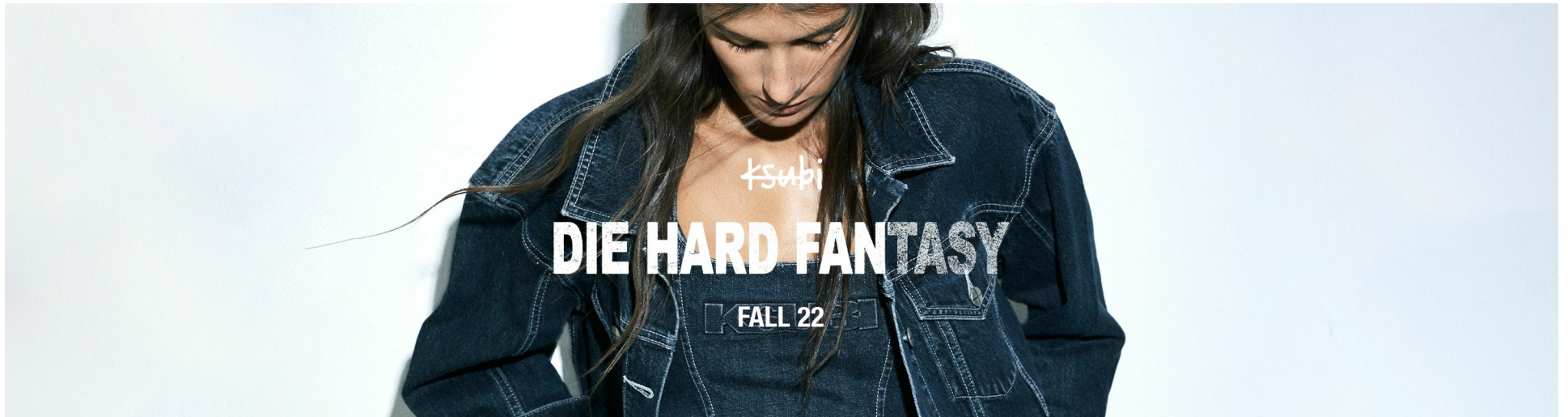


ksubi





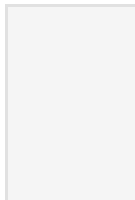
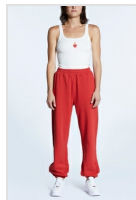
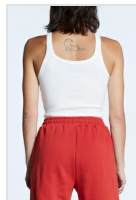
## TRIBUTE JACKET CRIMSON

Style #: WFA22JK003

Sizes: XS - XL

Material Composition: 70% Polyester, 30% Wool

Description: Oversized jacket with button up collar and fully lined interior. Made from a premium Melton wool blend. It features front embroidery, sleeve tag and Ksubi branding.



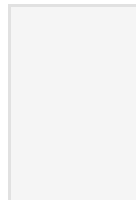
## EMBLAZED ARISE TANK WHITE

Style #: WFA22SI003

Sizes: XS - XL

Material Composition: 97% Cotton, 3% Elastane

Description: Fitted tank with scoop neck and narrow shoulder straps. Made from a premium cotton blend rib jersey in overdyed colour and vintage wash. It features exclusive front embroidery and Ksubi T-box embroidery.



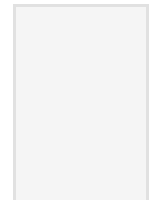
## EMBLAZED OH G CREW CRIMSON

Style #: WFA22FL011

Sizes: XS - XL

Material Composition: 100% Cotton

Description: Oversized sweater with dropped shoulder and long sleeve. Matching colour rib finish on neck band, cuffs and hem. Made from a premium brushed back cotton fleece. It features exclusive front embroidery and Ksubi branding.



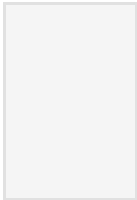
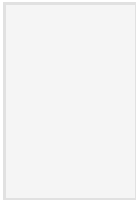
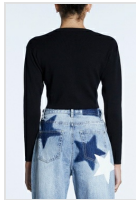
## EMBLAZED TRAXX CRIMSON

Style #: WFA22PA003

Sizes: XS - XL

Material Composition: 100% Cotton

Description: Relaxed fit, mid rise with elasticated waistband and cuffs at ankle. Made from a premium brushed back cotton fleece in overdyed colour. It features exclusive front embroidery and Ksubi branding.



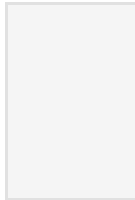
## SHRUNKEN CARDI BLACK EMBLAZED

Style #: WFA22KW003

Sizes: XS - XL

Material Composition: 50% Viscose, 30% Polyester, 20% Nylon

Description: Slim fit cardigan with button closure, round neck, long sleeves and cropped length. Made from a cashmere blend yarn. It features front embroidery, sleeve tag and Ksubi branding.



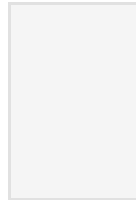
## SANCTIFIED BABY SS TEE CRIMSON

Style #: WFA22TE004

Sizes: XS - XL

Material Composition: 91% Cotton 9% Spandex

Description: Fitted tee with crew neck, cap sleeves and cropped length. Made from a premium cotton-elastane blend jersey. It features exclusive front print and Ksubi branding.



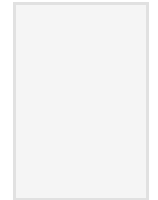
## SPRAY ON BLUEBELL EXTRA SPLIT

Style #: WFA22DJ017

Sizes: 23 - 32

Material Composition: 68% Cotton, 30% Recycled Cotton, 2% Elastane

Description: Super skinny fit, high rise and ankle grazing length with classic five pocket styling. Made from a premium European power-stretch denim in mid-blue wash with stone wash and subtle contrast wear. It features Ksubi branding.



## HI N WASTED BLUEBELL EXTRA SPLIT

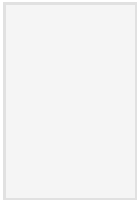
Style #: WFA22DJ014

Sizes: 23 - 32

Material Composition: 68% Cotton, 30% Recycled Cotton, 2% Elastane

Description: Super skinny fit, high rise and extra length with classic five pocket styling. Made from a premium European power-stretch denim in mid-blue wash with stone wash and subtle contrast wear. It features Ksubi branding.





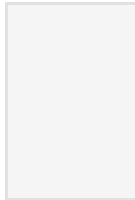
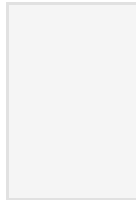
## RACER SHORT BLUEBELL SPLIT

Style #: WFA22WA005

Sizes: 23 - 32

Material Composition: 100% Cotton

Description: High waisted slim fit short and thigh grazing cut-off hem. Made from a premium European rigid denim in mid-blue wash with stone wash and subtle contrast wear. It features Ksubi branding.



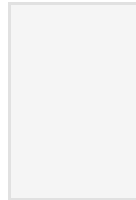
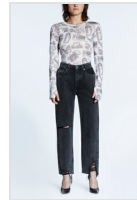
## PLAYBACK ETERNAL STAR

Style #: WFA22DJ007

Sizes: 23 - 32

Material Composition: 100% Cotton

Description: Relaxed straight leg with high waist and classic five pocket detailing. Made from a premium rigid denim in light indigo with stone wash, subtle contrast wear and whiskering. It features star ghost patch, star denim patch in white and Ksubi branding.



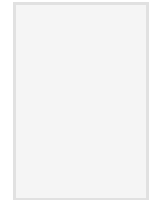
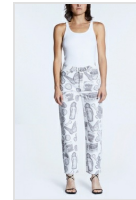
## SKRAPBOOK LS TOP

Style #: WFA22TE001

Sizes: XS - XL

Material Composition: 100% Tencel

Description: Body skimming fitted top with crew neck and long sleeves and thumb hole cut-outs. Made from a premium cupro jersey in an exclusive all over print. It features Ksubi branding.



## BROOKLYN JEAN SKRAPBOOK

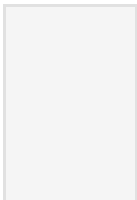
Style #: WFA22DJ013

Sizes: 23 - 32

Material Composition: 50% Recycled Cotton, 50% Cotton

Description: Mid-rise relaxed straight leg jean with classic five pocket styling. Made from a premium European rigid denim in white with an exclusive all over print. It features Ksubi branding.





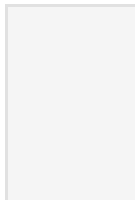
## DIVINITY BODYSUIT

Style #: WFA22BS003

Sizes: XS - XL

Material Composition: 100% Polyester

Description: Fitted, sleeveless bodysuit with crew neck and thong coverage. Made from a premium mesh with vibrant placement print. It features Ksubi branding and snaps in crotch opening.



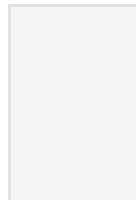
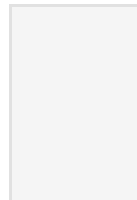
## DIVINITY LS TOP

Style #: WFA22FT005

Sizes: XS - XL

Material Composition: 100% Polyester

Description: Fitted top with crew neck and long sleeves and thumb hole cut-outs. Made from a premium mesh in vibrant placement print. It features Ksubi branding.



## BROOKLYN JEAN ECRU

Style #: WFA22DJ031

Sizes: 23 - 32

Material Composition: 100% Cotton

Description: Mid-rise relaxed straight leg jean with classic five pocket styling. Made from a premium European rigid denim in ecru wash. It features Ksubi branding.



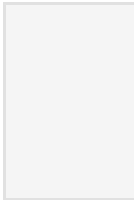
## DETTACHED JEAN ECRU

Style #: WFA22DJ026

Sizes: 23 - 32

Material Composition: 100% Cotton

Description: Wide leg jean with high waist and asymmetric cut-out detail on below waistband. Made from a premium European rigid denim in ecru wash. It features Ksubi branding.



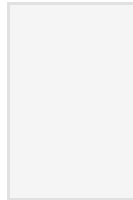
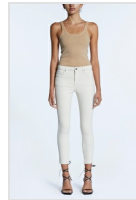
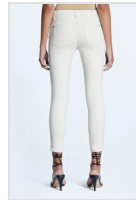
## FLY FANTASY KLASIK SS TEE WHITE

Style #: WFA22TE010

Sizes: XS - XL

Material Composition: 100% Cotton

Description: Relaxed fit t-shirt with crew neck, dropped shoulder and short sleeve. Made in a premium cotton jersey in overdyed colour and vintage wash. Featuring exclusive chest print and Ksubi branding.



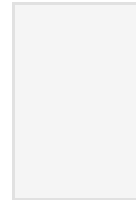
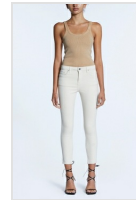
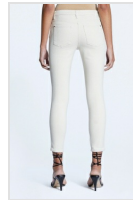
## HI N WASTED ECRU

Style #: WFA22DJ035

Sizes: 23 - 32

Material Composition: 98% Cotton, 2% Elastane

Description: Super skinny fit, high rise and extra length with classic five pocket styling. Made from a premium European power-stretch denim in ecru. It features Ksubi branding. IMAGE NOTE: Spray On fit pictured, will be in Hi n Wasted block



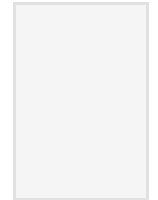
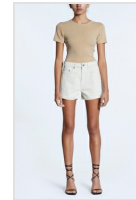
## SPRAY ON ECRU

Style #: WFA22DJ018

Sizes: 23 - 32

Material Composition: 98% Cotton, 2% Elastane

Description: Super skinny fit, high rise and ankle grazing length with classic five pocket styling. Made from a premium European power-stretch denim in ecru wash. It features Ksubi branding.



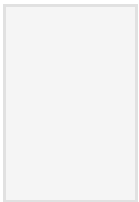
## RISE N HI SHORT ECRU

Style #: WFA22WA002

Sizes: 23 - 32

Material Composition: 100% Cotton

Description: High waisted cut off short with raw hem and side splits. Made from a premium European rigid denim in ecru wash. It features Ksubi branding.



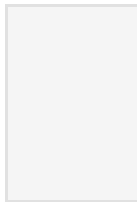
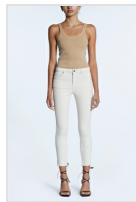
## ARISE SS TEE TAN

Style #: WFA22TE008

Sizes: XS - XL

Material Composition: 97% Cotton, 3% Elastane

Description: Figure hugging fitted t-shirt with crew neck and cap sleeves. Has centre back seam with tonal flat lock cover stitch. Made from a premium cotton blend rib jersey in overdyed colour and vintage wash. Features tonal cross dollar embroidery and Ksubi T-box embroidery.



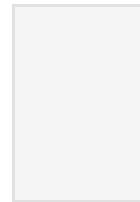
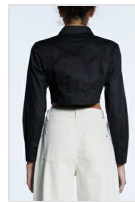
## ARISE TANK TAN

Style #: WFA22SI002

Sizes: XS - XL

Material Composition: 97% Cotton, 3% Elastane

Description: Fitted tank with scoop neck and narrow shoulder straps. Made from a premium cotton blend ribbing in overdyed colour and vintage wash. Features tonal cross dollar embroidery and Ksubi T-box embroidery.



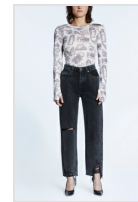
## TUCKED CROP SHIRT BLACK

Style #: WFA22SH003

Sizes: XS - XL

Material Composition: 100% Cotton

Description: Slim fit, button up shirt with long sleeves and cropped length. Made from a premium cotton shirting with light coating. It features cross dollar embroidery and Ksubi branding.



## BROOKLYN JEAN SHADOW TRASHED

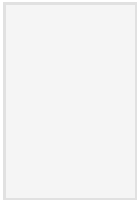
Style #: WFA22DJ010

Sizes: 23 - 32

Material Composition: 100% Cotton

Description: Mid-rise relaxed straight leg jean with classic five pocket styling. Made from a premium rigid denim in black heavy stone wash. It features distressing, raw cut hem and Ksubi branding.





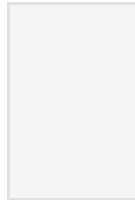
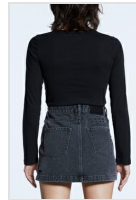
## ALTITUDE BOILERDRESS SHADOW

Style #: WFA22DR003

Sizes: XS - XL

Material Composition: 100% Cotton

Description: Shirt-dress with relaxed bodice, made to blouson over a fitted skirt. Button up collar, classic denim panel lines and mini length. Made from a premium rigid denim in black heavy stone wash. It features light grinding and Ksubi branding.



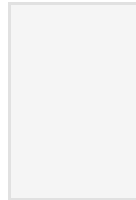
## DIE HARD LS TEE BLACK

Style #: WFA22TE002

Sizes: XS - XL

Material Composition: 100% Cotton

Description: Shrunken t-shirt fit with crew neck and long sleeves. Made in a premium cotton jersey. Features exclusive front print and Ksubi T-box print.



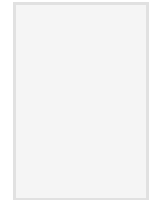
## SUPER X MINI NAVANA PATCHED

Style #: WFA22SK005

Sizes: 23 - 32

Material Composition: 100% Cotton

Description: Super high waisted mini skirt with a fitted silhouette. Made from a premium rigid denim in dusty black with stone wash. It features multiple plain and printed patches, embroideries and Ksubi branding.



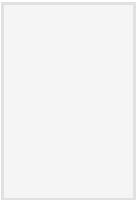
## LO KEY JEAN NAVANA PATCHED

Style #: WFA22DJ027

Sizes: 23 - 32

Material Composition: 100% Cotton

Description: Relaxed straight leg jean, sits mid rise with front tucks at waistband and classic five pocket detailing. Made from a premium rigid denim in dusty black with stone wash. It features multiple plain and printed patches, embroideries and Ksubi branding. SAMPLE NOTE: Sample pictured is Playback fit, will be 'Lo Key' fit



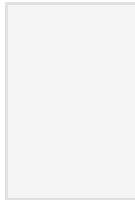
## KALI SHORT SHADOW TRASHED

Style #: WFA22WA001

Sizes: 23 - 32

Material Composition: 100% Cotton

Description: Mid rise waist, high thigh grazing length with raw cut hem. Made from a premium rigid denim in black heavy stone wash. It features distressing, light grinding and Ksubi branding.



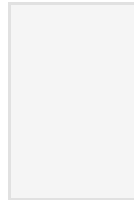
## DIE HARD OH G SS TEE BLACK

Style #: WFA22TE011

Sizes: XS - XL

Material Composition: 100% Cotton

Description: Boyfriend t-shirt fit with crew neck, dropped shoulder, short sleeve and rat tail detail. Made in a premium heavy-weight cotton jersey. It features exclusive print and Ksubi T-box print.



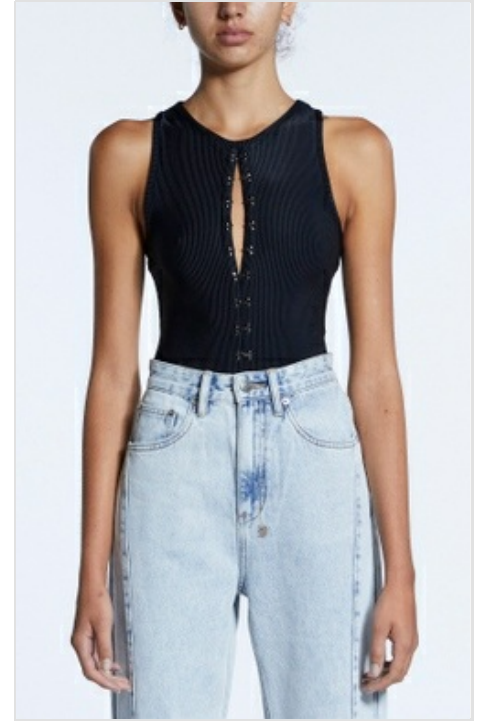
## DIE HARD SLOUCH HOODIE BLACK

Style #: WFA22FL002

Sizes: XS - XL

Material Composition: 100% Cotton

Description: Oversized, boxy fit hoodie with dropped shoulder, long sleeve and front pouch patch. Made from a premium cotton fleece in jet black and vintage wash. It features exclusive artwork and Ksubi T-box print.



## UNDONE BODYSUIT BLACK

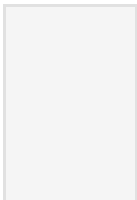
Style #: WFA22BS002

Sizes: XS - XL

Material Composition: 87% Nylon, 23% Elastane

Description: Fitted, sleeveless bodysuit with crew neck and thong coverage. Made from a premium slinky rib jersey. It features Centre Front opening with metal hook & eye detailing, Ksubi branding and snaps in crotch opening.





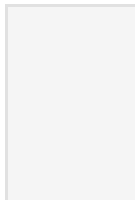
## JORDAN MIDI SKIRT MUSE

Style #: WFA22SK006

Sizes: 23 - 32

Material Composition: 100% Cotton

Description: Midi skirt with asymmetric button front closure and panel line detailing. Made from a premium rigid denim in washed out indigo with heavy stone wash. It features light grinding and Ksubi branding.



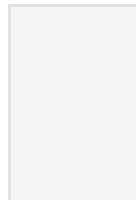
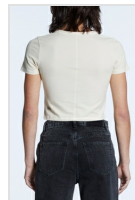
## PLAYBACK MUSE PANEL

Style #: WFA22DJ001

Sizes: 23 - 32

Material Composition: 100% Cotton

Description: Relaxed straight leg with high waist and classic five pocket detailing. Made from a premium rigid denim in washed out indigo with heavy stone wash. It features panel detail, hem split and Ksubi branding.



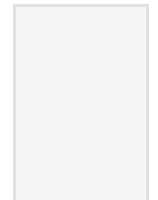
## SOTT STAR BABY SS TEE ECRU

Style #: WFA22TE005

Sizes: XS - XL

Material Composition: 91% Cotton 9% Spandex

Description: Fitted tee with crew neck, cap sleeves and cropped length. Made from a premium cotton-elastane blend jersey. It features exclusive front print and Ksubi branding.



## SOTT STAR KLASSIC SS TEE CHARCOAL

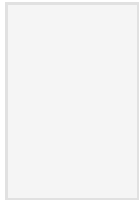
Style #: WFA22TE009

Sizes: XS - XL

Material Composition: 100% Cotton

Description: Relaxed fit t-shirt with crew neck, dropped shoulder and short sleeve. Made in a premium cotton jersey in overdyed colour and vintage wash. Featuring exclusive chest print and Ksubi branding.





## NINE O MUSE PANEL

Style #: WFA22DJ030

Sizes: 23 - 32

Material Composition: 100% Cotton

Description: Slim cigarette fit, high rise and crop length with classic five pocket detailing. Made from a premium rigid denim in washed out indigo with heavy stone wash. It features panel detailing, hem split and Ksubi branding.

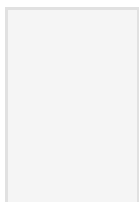
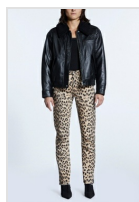
## UNDONE SHIRT MUSE

Style #: WFA22SH001

Sizes: XS - XL

Material Composition: 100% Cotton

Description: Oversized shirt with metal hook and bar closures, long sleeves, and curved hem. Made from a premium denim shirting in washed out indigo with heavy stone wash. It features exaggerated side hem splits, cross dollar print and Ksubi T-box print.



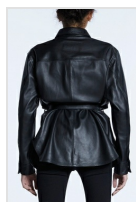
## FLIGHT RISK AVIATOR BLACK

Style #: WFA22JK005

Sizes: XS - XL

Material Composition: 100% Leather

Description: Oversized aviator jacket with fully lined interior and padded in the body and sleeves. Made from a premium leather and faux shearling on detachable collar. It features metallic Ksubi branding. **SAMPLE NOTE:** ++ embossing on front to be removed. Front welt pocket will be moved up to replace it & flaps width will be halved. T-box to change to metal t-box charm.



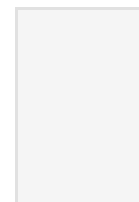
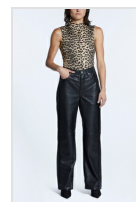
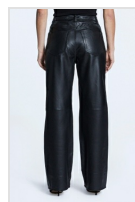
## VOYAGER SHACKET BLACK LEATHER

Style #: WFA22JK006

Sizes: XS - XL

Material Composition: 100% Leather

Description: Oversized shirt-jacket with full length sleeves and curved hem. It has front patch pockets, snap button closure and detachable self waist tie. Made from a premium 100% lamb leather with smooth and buttery hand feel. It features Ksubi branding.



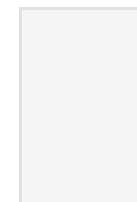
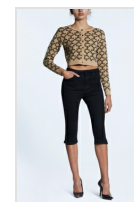
## CROSSIN PANT BLACK LEATHER

Style #: WFA22DJ032

Sizes: 23 - 32

Material Composition: 100% Leather

Description: High-rise relaxed straight leg jean with classic five pocket styling. Made from a premium 100% lamb leather with smooth and buttery hand feel. It features Ksubi branding. **SAMPLE NOTE:** Pocketing and fly will be per CROSSIN PANT block.



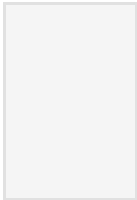
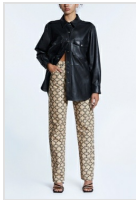
## SHRUNKEN CARDI ICONIC

Style #: WFA22KW004

Sizes: XS - XL

Material Composition: 95% Cotton, 5% Cashmere

Description: Slim fit cardigan with button closure, round neck, long sleeves and cropped length. Made from a cashmere blend yarn in an exclusive intarsia pattern. It features sleeve tag and Ksubi branding.

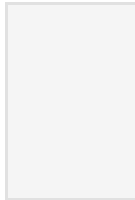
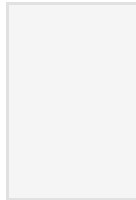


## PLAYBACK ICONIC

Style #: WFA22DJ005

Sizes: 23 - 32

Material Composition: 50% Recycled Cotton, 50% Cotton  
Description: Relaxed straight leg with high waist and classic five pocket detailing. Made from a premium European rigid denim in an exclusive all over print. It features Ksubi branding.  
SAMPLE NOTE: base colour to match SHRUNKEN CARDI ICONIC

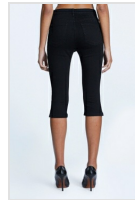


## KENDALL CAPRI ICONIC

Style #: WFA22DJ029

Sizes: 23 - 32

Material Composition: 92% Cotton, 6% T400 Lycra, 2% Lyocell  
Description: Skinny fit, high rise and petal pusher length with classic five pocket styling. Made from a premium European power-stretch denim in an exclusive all over print. It features Ksubi branding. SAMPLE NOTE: Fit will be as per KENDALL CAPRI JET BLACK. Print to match PLAYBACK ICONIC

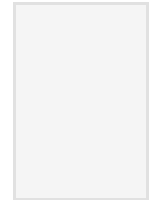


## KENDALL CAPRI JET BLACK

Style #: WFA22DJ028

Sizes: 23 - 32

Material Composition: 92% Cotton, 6% Elastomultiester, 2% Elastane  
Description: Skinny fit, high rise and petal pusher length with classic five pocket styling. Made from a premium European power-stretch denim in jet black. It features Ksubi branding.



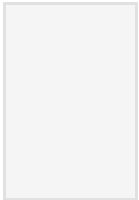
## IMPRINT CROPPED ARISE TANK WHITE

Style #: WFA22SI001

Sizes: XS - XL

Material Composition: 97% Cotton, 3% Elastane  
Description: Fitted tank with scoop neck, narrow shoulder straps and raw cut cropped length. Made from a premium cotton blend ribbing. It features an exclusive front embroidery and Ksubi T-box embroidery.





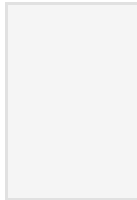
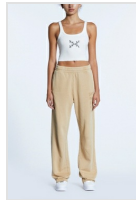
## IMPRINT SLOUCH HOODIE TAN

Style #: WFA22FL003

Sizes: XS - XL

Material Composition: 100% Cotton

Description: Oversized, boxy fit hoodie with dropped shoulder, long sleeve and front pouch patch. Made from a premium brushed back cotton fleece in overdyed colour and vintage wash. It features exclusive artwork and Ksubi T-box print.



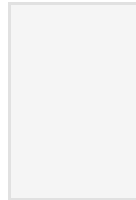
## IMPRINT TRACKPANT TAN

Style #: WFA22PA005

Sizes: XS - XL

Material Composition: 100% Cotton

Description: Relaxed fit track pant with straight legs, elasticated waistband sits on mid waist. Made from a brushed back cotton fleece in overdyed colour and vintage wash. It features front embossed print and Ksubi T-box print.



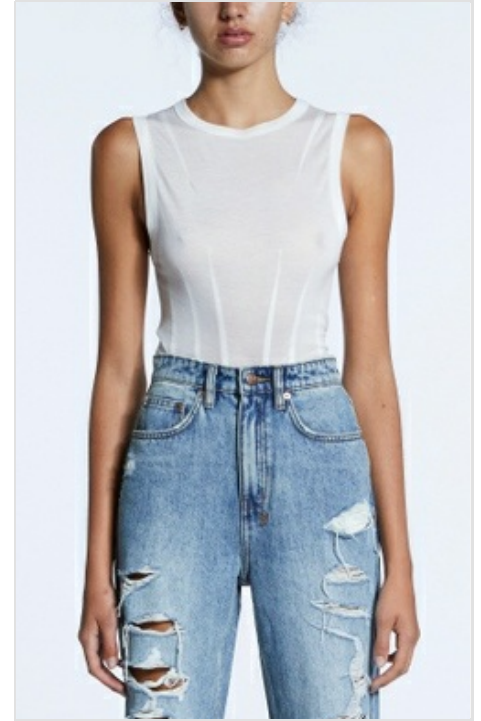
## IMPRINT TRAK SHORT TAN

Style #: WFA22WA009

Sizes: XS - XL

Material Composition: 100% Cotton

Description: Relaxed fit short, mid rise with elasticated waistband and inside adjustable drawcord. Made in a premium cotton fleece in snow marle. Features exclusive front leg artwork and Ksubi branding.



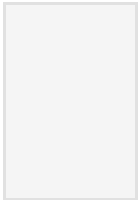
## RESTRICT CORSET BODYSUIT ECRU

Style #: WFA22BS001

Sizes: XS - XL

Material Composition: 100% Tencel

Description: Body hugging fit, sleeveless bodysuit with crew neck and thong coverage. Made from a premium cupro jersey with ultra soft hand feel. It features front and back dart detailing, snaps in crotch opening and Ksubi branding.



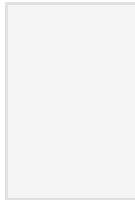
## BUSTIER TOP OBSCURA

Style #: WFA22FT001

Sizes: XS - XL

Material Composition: 99% Cotton, 1% Elastane

Description: Fitted bustier with scoop neck, back zipper closure and cropped length. Made from a premium rigid denim in dark indigo wash. It features 'Sign of the times' embossed print, front and back panels details, and Ksubi branding.



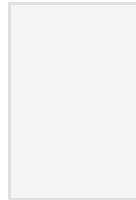
## OVERSIZED JACKET OBSCURA

Style #: WFA22JK002

Sizes: XS - XL

Material Composition: 100% Cotton

Description: Oversized fit trucker jacket with button closure, dropped shoulders, front panel detail and pockets. Made from a premium rigid denim in dark indigo wash. It features Sign Of The Times Embossed detail on back yoke and Ksubi branding.



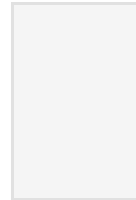
## BROOKLYN JEAN OBSCURA

Style #: WFA22DJ011

Sizes: 23 - 32

Material Composition: 100% Cotton

Description: Mid-rise relaxed straight leg jean with classic five pocket styling. Made from a premium rigid denim in dark indigo wash. It features Ksubi branding.



## SOHO OBSCURA

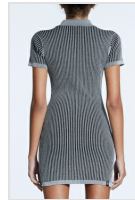
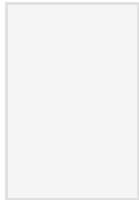
Style #: WFA22DJ025

Sizes: 23 - 32

Material Composition: 99% Cotton, 1% Elastane

Description: Bootcut leg jean, high rise with classic five pocket detailing. Made from a premium rigid denim in vintage indigo wash. It features Ksubi branding. SAMPLE NOTE: Fit & shape of flare will be improved for bulk. Will have smoother 'Flare' shape with slightly wider leg opening at hem





## A LEAGUE OH G CROPPED GREY MARLE

Style #: WFA22FL007

Sizes: XS - XL

Material Composition: 100% Cotton

Description: Oversized sweater with mock rib neck, dropped shoulder and long sleeve. Made from a premium loopback cotton fleece in grey marle. It features front print and Ksubi branding.

## A LEAGUE TRAK GREY MARLE

Style #: WFA22PA002

Sizes: XS - XL

Material Composition: 100% Cotton

Description: Relaxed fit, mid rise with elasticated waistband and cuffed at ankle. Made from a premium loopback cotton fleece in grey marle. It features exclusive front embroidery, multiple prints, and Ksubi branding.

## LEAGUE POLO MINI DRESS BLACK/WHITE

Style #: WPF22DR003

Sizes: XS - XL

Material Composition: 86% Cotton, 11% Nylon, 3% Elastane

Description: Fitted short sleeve dress in mini length. Made from a premium cotton blend yarn in a reverse rib construction and two tone look. It features Ksubi branded tab on back hem and double open ended metal zip opening at CF with Ksubi branded pullers.

## DETTACHED TROUSER KLASSIC

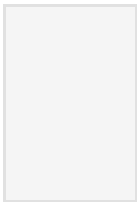
Style #: WPF22PA001

Sizes: 23 - 32

Material Composition: 65% Polyester, 33% Rayon, 2% Elastane

Description: Wide leg trouser with high waist and asymmetric cut-out detail on below waistband. Made from a premium wool blend suiting. It features a 'klassic' pinstripe weave & Ksubi branding.





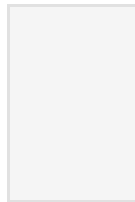
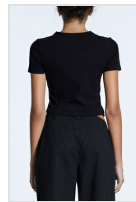
## BOND BLAZER KLASIK

Style #: WPF22JK003

Sizes: XS - XL

Material Composition: 65% Polyester, 33% Rayon, 2% Elastane

Description: Oversized, double breasted blazer jacket. Made from a premium wool blend suiting with low profile shoulder pads and full lining inside. It features a 'klassik' pinstripe weave, Ksubi branding and branded buttons.



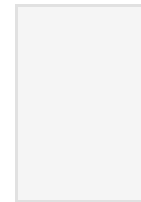
## FANTASY BABY SS TEE BLACK

Style #: WFA22TE006

Sizes: XS - XL

Material Composition: 100% Cotton

Description: Fitted tee with crew neck, cap sleeves and cropped length. Made from a premium cotton-elastane blend jersey in black. It features an exclusive front artwork with embroidery & screen print and Ksubi branding.



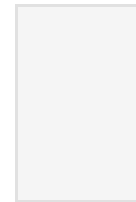
## FANTASY KLASIK CREW BLACK

Style #: WFA22FL009

Sizes: XS - XL

Material Composition: 100% Cotton

Description: Relaxed fit sweater with dropped shoulder, long sleeves and rib panel detail. Made from a premium brushed back cotton fleece in black. It features exclusive artwork using a combination of embroidery and screen-print and Ksubi T-box print.



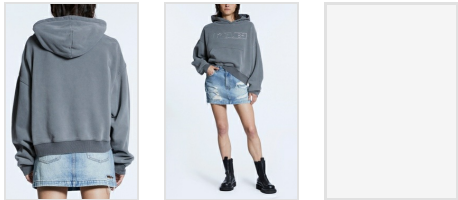
## ALLOY SOTT MINI TEE VINTAGE GREY

Style #: WPF22TE002

Sizes: XS - XL

Material Composition: 100% Cotton

Description: Shrunk boxy t-shirt fit with crew neck and cap sleeves. Made from a premium cotton jersey that has been overdyed and then washed back for a vintage look. Features exclusive metallic silicone 'Sign of the Times' print and Ksubi branding.



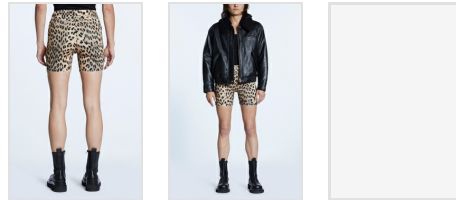
## ALLOY SOTT SLOUCH HOODIE VINTAGE GREY

Style #: WPF22FL011

Sizes: XS - XL

Material Composition: 100% Cotton

Description: Oversized, boxy fit hoodie with dropped shoulder, long sleeve and front pouch patch. Made from a premium cotton fleece in overdyed colour and vintage wash. It features exclusive metallic silicone 'Sign of the times' print and Ksubi T-box print.



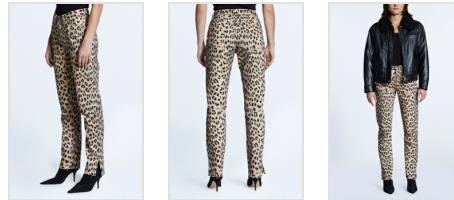
## HARLEM SHORT WILD TAN

Style #: WFA22WA006

Sizes: 23 - 32

Material Composition: 92% Cotton, 6% T400 Lycra, 2% Lyocell

Description: High waisted fitted short and thigh grazing cut-off hem. Made from a premium European power stretch denim in an exclusive all over print. It features Ksubi branding. SAMPLE NOTE: base colour to match SHRUNKEN CARDI ICONIC



## MELROSE WILD TAN

Style #: WFA22DJ022

Sizes: 23 - 32

Material Composition: 50% Recycled Cotton, 50% Cotton

Description: Slim cigarette fit, high rise, classic five pocket detailing and full length with side seam hem split. Made from a premium European rigid denim in an exclusive all over print. It features Ksubi branding. SAMPLE NOTE: base colour to match SHRUNKEN CARDI ICONIC



## UNDONE KNIT BLACK

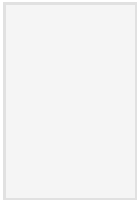
Style #: WFA22KW001

Sizes: XS - XL

Material Composition: 95% Cotton, 5% Cashmere

Description: Oversized knit with mock neck and detachable sleeves. Made from a premium cashmere blend yarn. It features metal hook and bar hardware along detachable sleeves, front cross dollar embroidery, large back cross embroidery, Ksubi sleeve tag and T-box embroidery. SAMPLE NOTE: Hook and eyes will be larger sized, edges of removable sleeves will have tubular hem finish





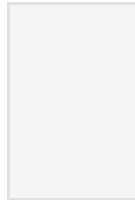
## SUSPENSE TOP WILD TAN

Style #: WFA22FT003

Sizes: XS - XL

Material Composition: 95% Viscose, 5% Elastane

Description: Body skimming fitted tank with turtle neck. Made from a premium jersey in an exclusive all over print. It features front flat lock stitch along CF seam detail and Ksubi branding.



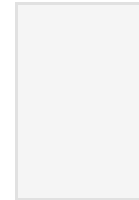
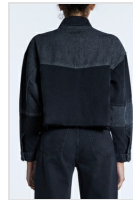
## BROOKLYN JEAN DESTINY NOIR

Style #: WFA22DJ008

Sizes: 23 - 32

Material Composition: 100% Cotton

Description: Mid-rise relaxed straight leg jean with classic five pocket styling. Made from a premium European rigid denim in dusted black wash. It features dry handled faded panelling, decon with repair stitching, light grinding and Ksubi branding.



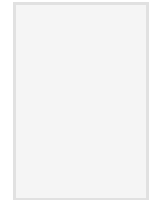
## DESTINY JACKET NOIR

Style #: WFA22JK001

Sizes: XS - XL

Material Composition: 100% Cotton

Description: Relaxed fitted jacket. It has sleeve with tapered cuff, front pockets, button closure, cropped length with raw cut hem. Made from a premium European rigid denim in dusted black wash. It features dry washed panelling detail and Ksubi branding.



## RISE N HI SHORT LIFETIME

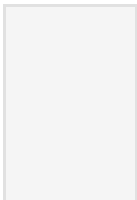
Style #: WFA22WA004

Sizes: 23 - 32

Material Composition: 100% Cotton

Description: High waisted cut off short with raw hem and side splits. Made from a premium rigid denim in vintage indigo wash. It features Ksubi branding. SAMPLE NOTE: Hardware will be oxidized shiny copper as per LIFETIME wash story (refer to other samples in this wash)





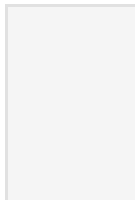
## SOHO LIFETIME

Style #: WFA22DJ024

Sizes: 23 - 32

Material Composition: 99% Cotton, 1% Elastane

Description: Bootcut leg jean, high rise with classic five pocket detailing. Made from a premium rigid denim in vintage indigo wash. It features Ksubi branding. SAMPLE NOTE: Fit & shape of flare will be improved for bulk. Will have smoother 'Flare' shape with slightly wider leg opening at hem



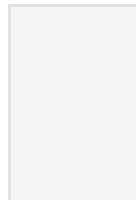
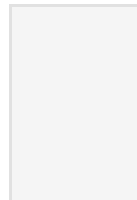
## BROOKLYN JEAN LIFETIME

Style #: WFA22DJ012

Sizes: 23 - 32

Material Composition: 100% Cotton

Description: Mid-rise relaxed straight leg jean with classic five pocket styling. Made from a premium rigid denim in vintage indigo wash. It features Ksubi branding.



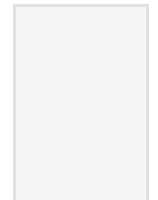
## EASY OVERALL LIFETIME

Style #: WFA22JU002

Sizes: 23 - 32

Material Composition: 100% Cotton

Description: Relaxed fit overall adjustable shoulder straps, wide straight legs and full length. Has faux front fly topstitch details and tack button closures on both sides. Made from a premium rigid denim in vintage indigo wash. It features Ksubi branding.



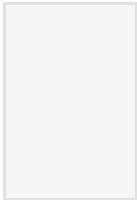
## EASY CUTOFF OVERALL LIFETIME DRAGGED

Style #: WFA22JU003

Sizes: 23 - 32

Material Composition: 100% Cotton

Description: Relaxed fit overall adjustable shoulder straps and short length. Has faux front fly topstitch details and tack button closures on both sides. Made from a premium rigid denim in vintage indigo wash. It features front leg rip, light grinding and Ksubi branding.



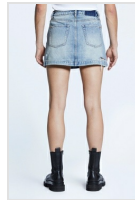
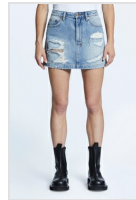
## EDEN OH G HOODIE BLACK

Style #: WFA22FL005

Sizes: XS - XL

Material Composition: 100% Cotton

Description: Boyfriend fit hoodie, oversized fit with dropped shoulder and long sleeve. Featuring signature rats tail, drawcords with metal cord ends and a front pouch pocket. Made from a premium loopback cotton fleece. It features exclusive front and oversized back print and Ksubi branding.



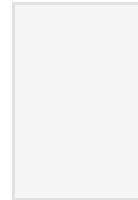
## MODEL MINI LIFETIME DRAGGED

Style #: WFA22SK001

Sizes: 23 - 32

Material Composition: 100% Cotton

Description: High wasted, thigh grazing mini with classic five pocket styling. Made from a premium rigid denim in vintage indigo wash. It features extreme distressing, raw cut hem and Ksubi branding.



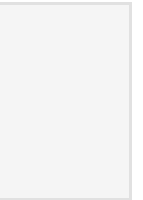
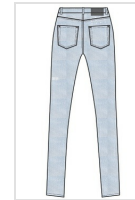
## PLAYBACK LIFETIME DRAGGED

Style #: WFA22DJ006

Sizes: 23 - 32

Material Composition: 100% Cotton

Description: Relaxed straight leg with high waist and classic five pocket detailing. Made from a premium rigid denim in vintage indigo wash. It features extreme decon, subtle grinding and Ksubi branding.



## HI N WASTED LIGHT STONE

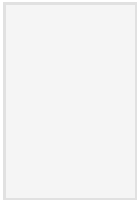
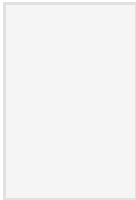
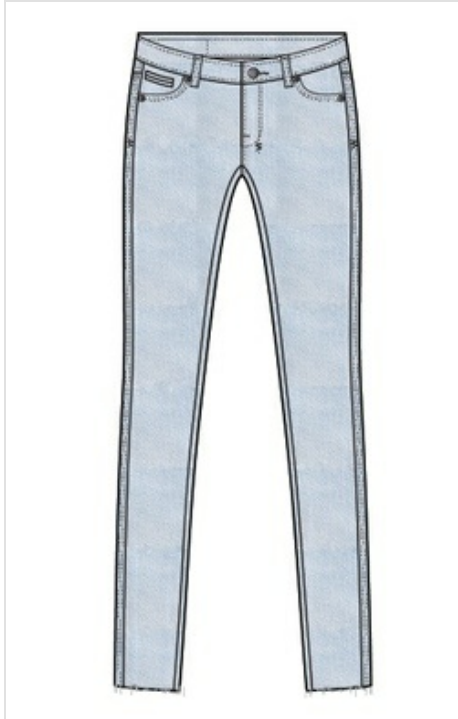
Style #: WFA22DJ039

Sizes: 23 - 32

Material Composition: 98% Cotton, 2% Elastane

Description: Super skinny fit, high rise and full length with classic five pocket styling. Made from a premium European power-stretch denim in light blue wash with stone wash and subtle wear. It features Ksubi branding.





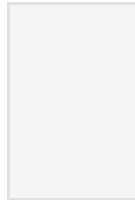
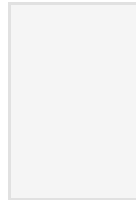
## SPRAY ON LIGHT STONE

Style #: WFA22DJ038

Sizes: 23 - 32

Material Composition: 98% Cotton, 2% Elastane

Description: Super skinny fit, high rise and ankle grazing length with classic five pocket styling. Made from a premium European power-stretch denim in light blue wash with stone wash and subtle contrast wear. It features Ksubi branding.



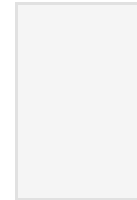
## 4 X 4 MINI SS TEE SNOW MARLE

Style #: WFA22TE007

Sizes: XS - XL

Material Composition: 100% Cotton

Description: Shrunken boxy t-shirt fit with crew neck and cap sleeves. Made from a premium cotton jersey in snow marle. Features tonal cross dollar embroidery and Ksubi branding.



## 4X4 KLASSIC CREW SNOW MARLE

Style #: WFA22FL008

Sizes: XS - XL

Material Composition: 100% Cotton

Description: Relaxed fit sweater with dropped shoulder, long sleeves and rib panel detail. Made from a premium loopback cotton fleece in snow marle. It features cross dollar embroidery and Ksubi T-box embroidery.



## 4 X 4 OH G HOODIE SNOW MARLE

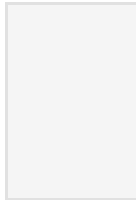
Style #: WFA22FL001

Sizes: XS - XL

Material Composition: 100% Cotton

Description: Boyfriend fit hoodie, oversized fit with dropped shoulder and long sleeve. Featuring signature rats tail, drawcords with metal cord ends and a front pouch pocket. Made from a premium loopback cotton fleece in snow marle. Features cross dollar embroidery in tonal colour and Ksubi branding.





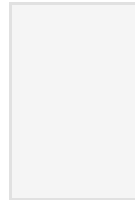
## 4 X 4 TRAK SNOW MARLE

Style #: WFA22PA001

Sizes: XS - XL

Material Composition: 100% Cotton

Description: Relaxed fit short, mid rise with elasticated waistband and inside adjustable drawcord. Made from a premium loopback cotton fleece in snow marle. Features cross dollar embroidery in tonal colour and Ksubi branding.



## 4 X 4 TRAK SHORT SNOW MARLE

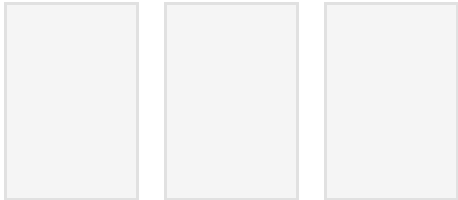
Style #: WFA22WA007

Sizes: XS - XL

Material Composition: 100% Cotton

Description: Relaxed fit short, mid rise with elasticated waistband and inside adjustable drawcord. Made in a premium cotton fleece in snow marle. Features cross dollar embroidery in tonal colour and Ksubi branding.

## CORE



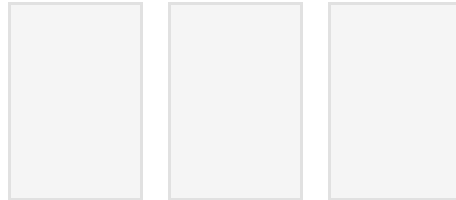
### 3 X 4 MINI SS TEE JET BLACK

Style #: 5000006410

Sizes: XS - L

Material Composition: 100% Cotton

Description: Fitted mini tee with crew neck and cap sleeve. Made in a premium 100% cotton jersey with aged wash. Featuring cross dollar embroidery in tonal colour and Ksubi branding.



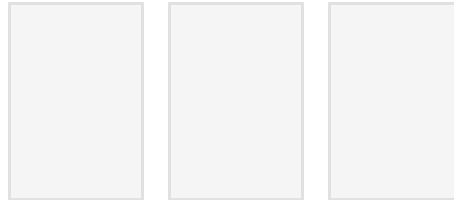
### 3 X 4 CREW JET BLACK

Style #: 5000006407

Sizes: XS - L

Material Composition: 100% Cotton

Description: Relaxed fit sweater with dropped shoulder, long sleeves and rib details. Made in a premium 100% loopback cotton fleece with dry hand feel. Featuring cross dollar embroidery in tonal colour and Ksubi branding.



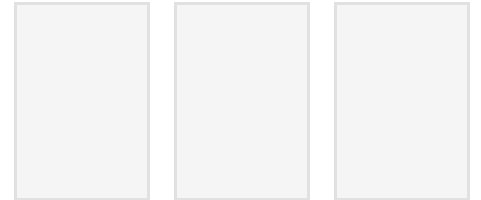
### 3 X 4 OH G HOODIE JET BLACK

Style #: 5000006406

Sizes: XS - L

Material Composition: 100% Cotton

Description: Boyfriend hoodie look, oversized fit with dropped shoulder and long sleeve. Featuring rat tail, drawcords with metal cord ends and a front pouch pocket. Made in a premium 100% loopback cotton fleece with dry hand feel. Detailing cross dollar embroidery in tonal colour and Ksubi branding.



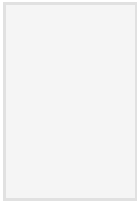
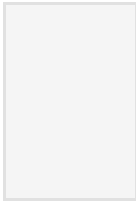
### 3 X 4 TRAK JET BLACK

Style #: 5000006408

Sizes: XS - L

Material Composition: 100% Cotton

Description: Relaxed fit, mid rise with elasticated waistband and cuffs at ankle. Made in a premium 100% loopback cotton fleece with dry hand feel. Featuring cross dollar embroidery in tonal colour and Ksubi branding.



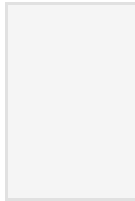
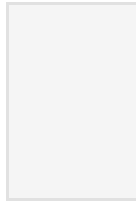
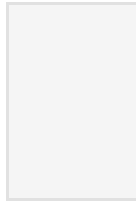
## 3 X 4 TRAK SHORT JET BLACK

Style #: 5000006409

Sizes: XS - L

Material Composition: 100% Cotton

Description: Relaxed fit short, mid rise with elasticated waistband and inside adjustable drawcord. Made in a premium 100% cotton jersey with dry hand feel. Featuring front and back print and Ksubi branding.



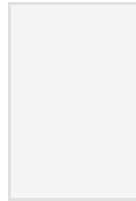
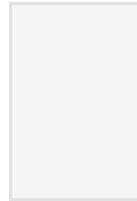
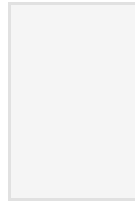
## 3 X 4 MINI SS TEE GREY MARLE

Style #: 5000006420

Sizes: XS - L

Material Composition: 100% Cotton

Description: Fitted mini tee with crew neck and cap sleeve. Made in a premium 100% cotton jersey in grey marl. Featuring cross dollar embroidery in tonal colour and Ksubi branding.



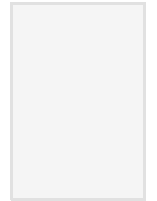
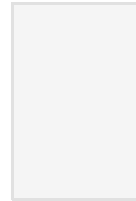
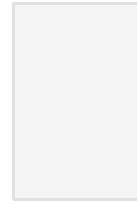
## 3 X 4 CREW GREY MARLE

Style #: 5000006411

Sizes: XS - L

Material Composition: 100% Cotton

Description: Relaxed fit sweater with dropped shoulder, long sleeves and rib details. Made in a premium 100% cotton fleece in grey marl. Detailing cross dollar embroidery in tonal colour and Ksubi branding.



## 3 X 4 OH G HOODIE GREY MARLE

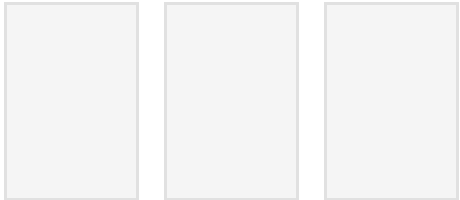
Style #: 5000006412

Sizes: XS - L

Material Composition: 100% Cotton

Description: Boyfriend hoodie look, oversized fit with dropped shoulder and long sleeve. Featuring rat tail, drawcords with metal cord ends and a front pouch pocket. Made in a premium 100% cotton fleece in grey marl. Detailing cross dollar embroidery in tonal colour and Ksubi branding.





## 3 X 4 TRAK GREY MARLE

Style #: 5000006413

Sizes: XS - L

Material Composition: 100% Cotton

Description: Relaxed fit, mid rise with elasticated waistband and cuffs at ankle. Made in a premium 100% cotton fleece in grey marl. Detailing cross dollar embroidery in tonal colour and Ksubi branding.



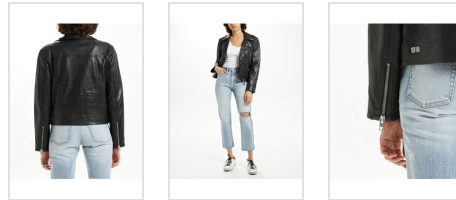
## 3 X 4 TRAK SHORT GREY MARLE

Style #: 5000006414

Sizes: XS - L

Material Composition: 100% Cotton

Description: Relaxed fit short, mid rise with elasticated waistband and inside adjustable drawcord. Made in a premium 100% cotton fleece in grey marl. Detailing cross dollar embroidery in tonal colour and Ksubi branding.



## AMPLIFY LEATHER JACKET BLACK

Style #: 5000004726

Sizes: XS - L

Material Composition: Lamb leather

Description: Leather biker jacket made from 100% lamb leather. This style is made by a premium leather manufacturer using responsibly sourced and REALGRADE certified New Zealand leather. Designed in a classic biker shape it features a soft handfeel and Ksubi branded silver hardware.



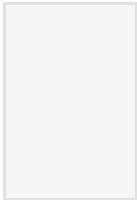
## ARISE TANK TOP BLACK

Style #: 5000005180

Sizes: XS - XL

Material Composition: 98% Cotton, 2% Elastane

Description: Fitted tank with scoop neck and narrow shoulder straps. Made from a premium European midweight rib with smooth, dry hand feel. Features dollar sign embroidery and Ksubi branding.



## ARISE TANK TOP WHITE

Style #: 5000005179

Sizes: XS - XL

Material Composition: 98% Cotton, 2% Elastane

Description: Fitted tank with scoop neck and narrow shoulder straps. Made from a premium European midweight rib with smooth, dry hand feel. Features dollar sign embroidery and Ksubi branding



## PLAYBACK KARMA

Style #: 5000004497

Sizes: 23 - 32

Material Composition: 100% Cotton

Description: Relaxed straight leg with high waist and classic Ksubi five pocket detailing. Made from a 100% cotton in a light vintage stonewash.



## PLAYBACK SKREAM TRASHED

Style #: 5000005097

Sizes: 23 - 32

Material Composition: 100% Cotton

Description: Relaxed straight leg with high waist and classic Ksubi five pocket detailing. Made from a 100% cotton stonewash with a vintage tint and rips and repairs for a love worn look.



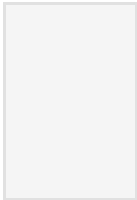
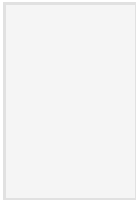
## HI N WASTED TRUE VINTAGE

Style #: 5000004667

Sizes: 23 - 32

Material Composition: 65% Lyocell, 23% Polyester, 10%

Viscose, 2% Lycra  
Description: Super skinny fit, high rise and crop length with classic Ksubi five pocket detailing. Made from a premium stretch denim, part of our Ksubi Skins range which feels like a second skin in an authentic vintage washed blue with subtle distressing. Finished with our signature Ksubi branding.



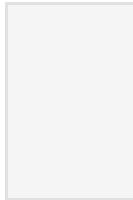
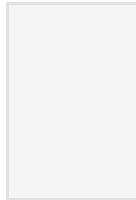
## SPRAY ON TRUE VINTAGE

Style #: 5000004804

Sizes: 23 - 32

Material Composition: 65% Lyocell, 23% Polyester, 10% Viscose, 2% Lycra

Description: Mid rise, skinny fit jean with classic Ksubi 5 pocket detailing. Ankle grazing cropped length. Made from a premium stretch denim, part of our Ksubi Skins range which feels like a second skin in an authentic vintage washed blue with subtle distressing. Finished with our signature Ksubi branding.



## SPRAY ON HELL CAT

Style #: 5000004544

Sizes: 23 - 32

Material Composition: 82% Cotton, 16% Polyester, 2% Elastane

Description: Mid rise, skinny fit jean with classic Ksubi 5 pocket detailing. Ankle grazing cropped length. Made from a premium stretch denim, part of our Ksubi Skins range which feels like a second skin in an authentic vintage washed blue with subtle distressing. Finished with our signature Ksubi branding. NOTE: Hi n Wasted fit pictured. This will come in the SPRAY ON fit - mid rise, ankle length



## CARRY OVER



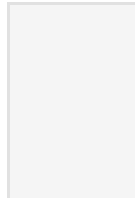
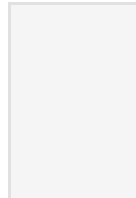
### OVERSIZED JACKET KARMA

Style #: 5000003501

Sizes: XS - L

Material Composition: 100% Cotton

Description: The Oversized Jacket is an oversized denim jacket made of rigid denim in a vintage blue wash. This trucker style features a relaxed, loose fit, branded hardware and Ksubi cross embroidery at the reverse.



### KAMILLE COAT BLACK

Style #: 5000005818

Sizes: XS - L

Material Composition: 60% Wool, 40% Polyester

Description: The Kamille Coat is a long line, relaxed fit coat in a black shade. Unlined and features internal felled seams for a luxe finish. Made from premium wool blend. Features branded front buttons. Signature sleeve tag. Ksubi t-box embroidered branding on back hem.



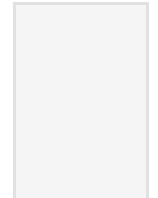
### KAMILLE COAT LATTE

Style #: 5000005819

Sizes: XS - L

Material Composition: 60% Wool, 40% Polyester

Description: The Kamille Coat is a long line, relaxed fit coat in a latte shade. Unlined and features internal felled seams for a luxe finish. Made from premium wool blend. Features branded front buttons. Signature sleeve tag. Ksubi t-box embroidered branding on back hem.



### PLAYBACK NOIR

Style #: 5000005573

Sizes: 23 - 32

Material Composition: 100% Cotton

Description: Relaxed straight leg with high waist and classic Ksubi five pocket detailing. Made from a premium rigid denim in a black wash. Features subtle distressing and Ksubi branding.



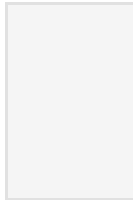
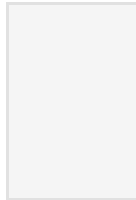
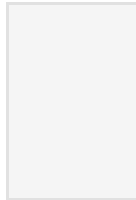
## BROOKLYN JEAN SKREAM TRASHED

Style #: 5000005822

Sizes: 23 - 32

Material Composition: 100% Cotton

Description: Relaxed straight leg jean with mid rise and classic five pocket styling. Made from a premium rigid denim in a light blue stone wash. Features knee slash, decons, repair stitching detail and light distressing. Finished with Ksubi branding.



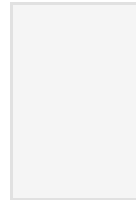
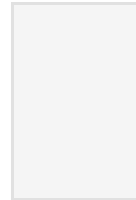
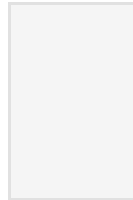
## BROOKLYN JEAN RUNAWAY

Style #: 5000006424

Sizes: 23 - 32

Material Composition: 100% Cotton

Description: Relaxed straight leg jean with mid rise and classic five pocket detailing. Made from a premium rigid denim in a mid blue with heavy stonewash. Features subtle distressing and signature Ksubi branding.



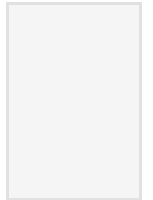
## BROOKLYN JEAN DIABLO

Style #: 5000005984

Sizes: 23 - 32

Material Composition: 100% Cotton

Description: Relaxed straight leg jean with mid rise and classic five pocket styling. Made from a premium rigid denim in a dusted black with stone washed. Features light distressing and Ksubi branding.



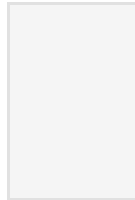
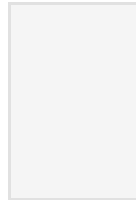
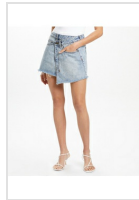
## RISE N HI SHORT KARNAGE

Style #: 5000004525

Sizes: 23 - 32

Material Composition: 100% Cotton

Description: High waisted cut off short with raw hem and side splits. Made from 100% cotton in a light vintage stonewash with signature Ksubi trashing at hem. SAMPLE NOTE: pocketing quality will be improved for bulk



## RAP SKIRT CLAS SICK

Style #: 1000062829

Sizes: 23 - 32

Material Composition: 100% Cotton

Description: The Rap Skirt is a classic mini skirt in a rigid denim construction. This style features an asymmetric front with wrap detail, five pockets, and distressing throughout.

## RAP SKIRT NOIR

Style #: WPF22SK010

Sizes: 23 - 32

Material Composition: 100% Cotton

Description: The Rap Skirt is a classic mini skirt in a rigid denim construction. This style features an asymmetric front with wrap detail, five pockets, and distressing throughout.