

JONATHAN SIMKHAI

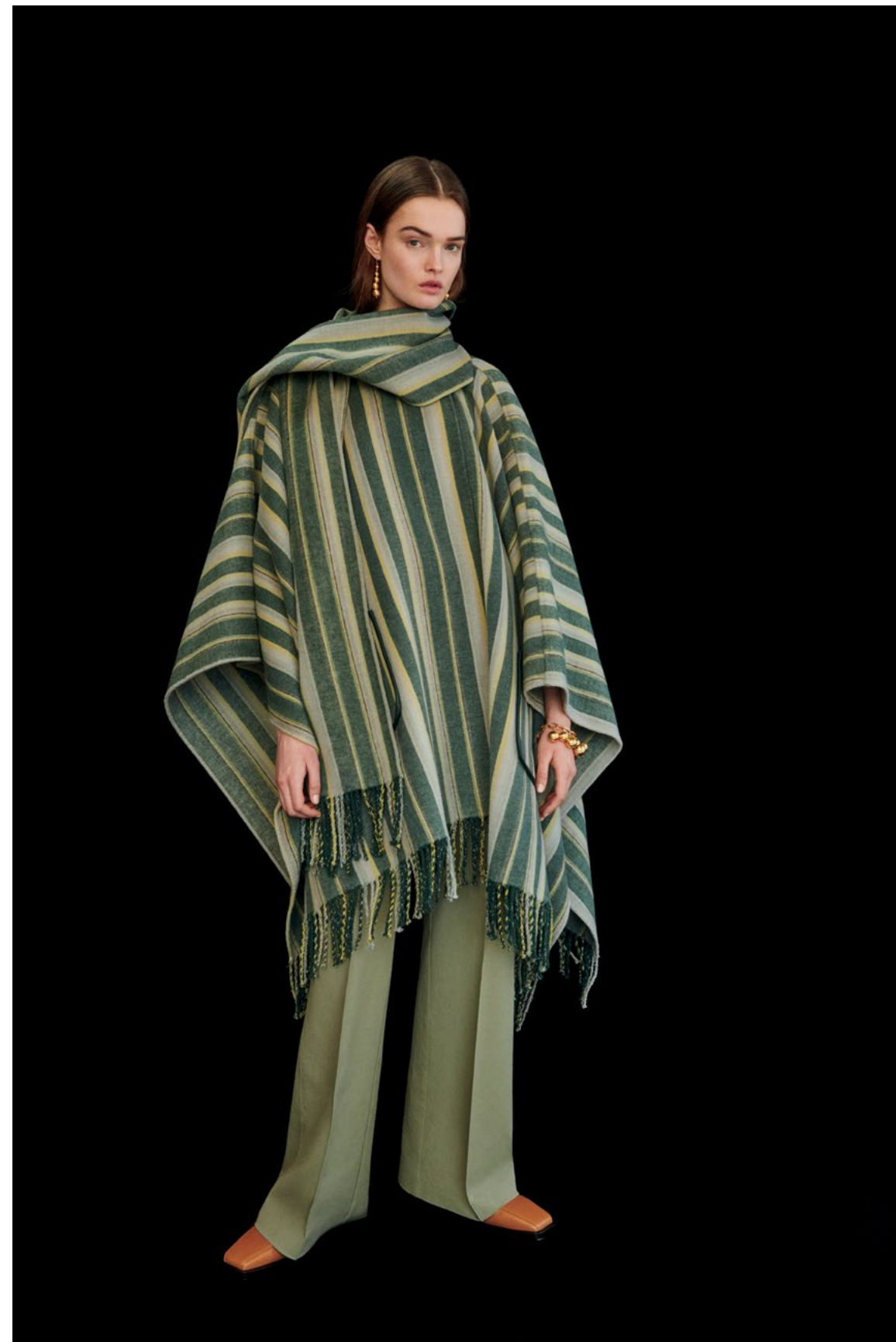
FALL / WINTER 2022

FALL WINTER 2022

For Fall 2022, I found so much inspiration from the American sculptor, Anne Truitt and more specifically her sculpture, *Insurrection* from 1962. Aesthetically evident in this Fall collection's modernity, simplicity, color choices and our perennial fascination with handwork. Anne Truitt, unlike most of her contemporaries and the sculptors of that time, did all of her minimalist work by hand. And through our exploration I learned firsthand what craft can do for community; for our community here in California and the camaraderie that comes with it. The artisanal and textured delicacy lies in compelling contrast to our first foray into the metaverse with a runway show this season, pushing craft into a new era.





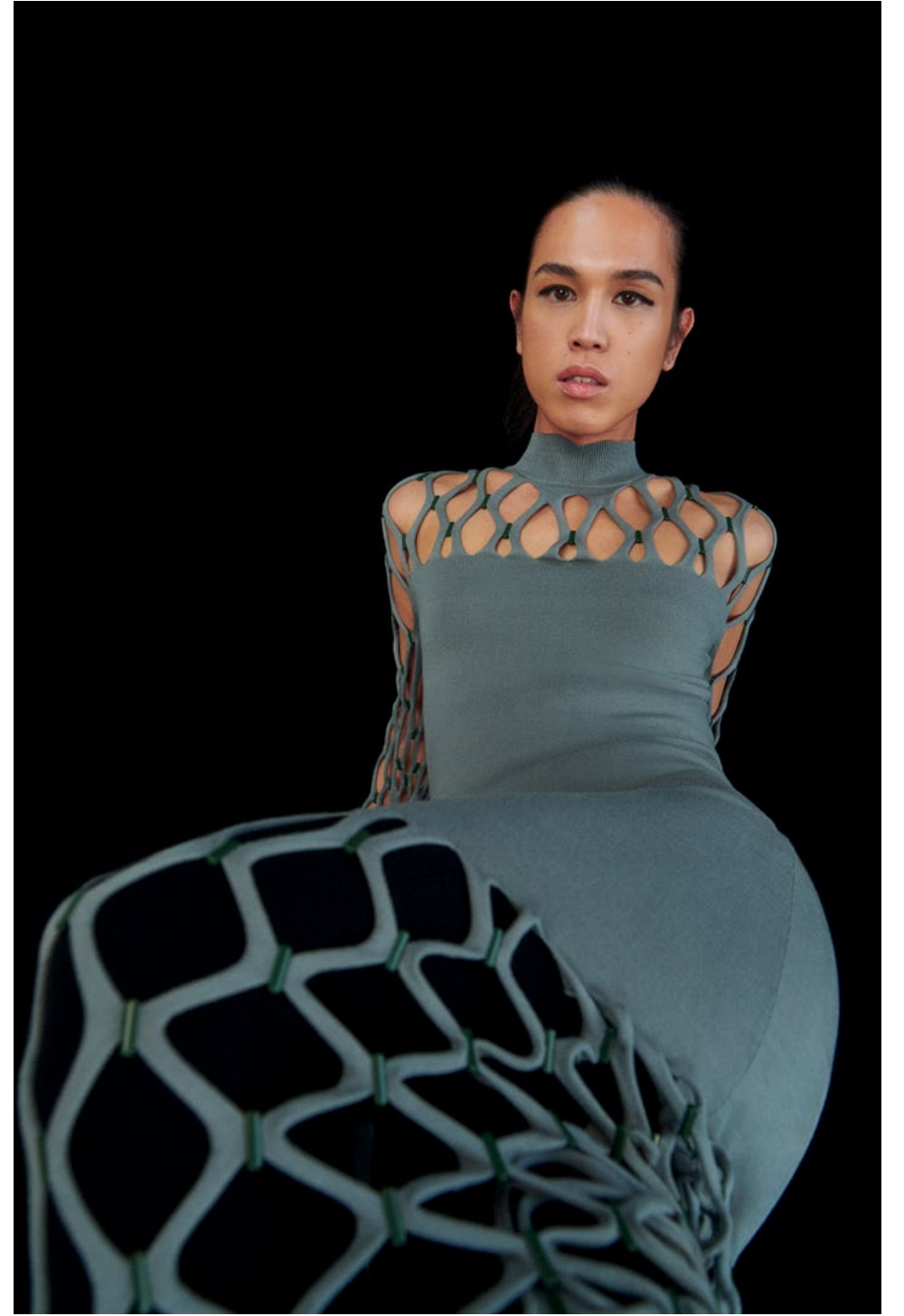










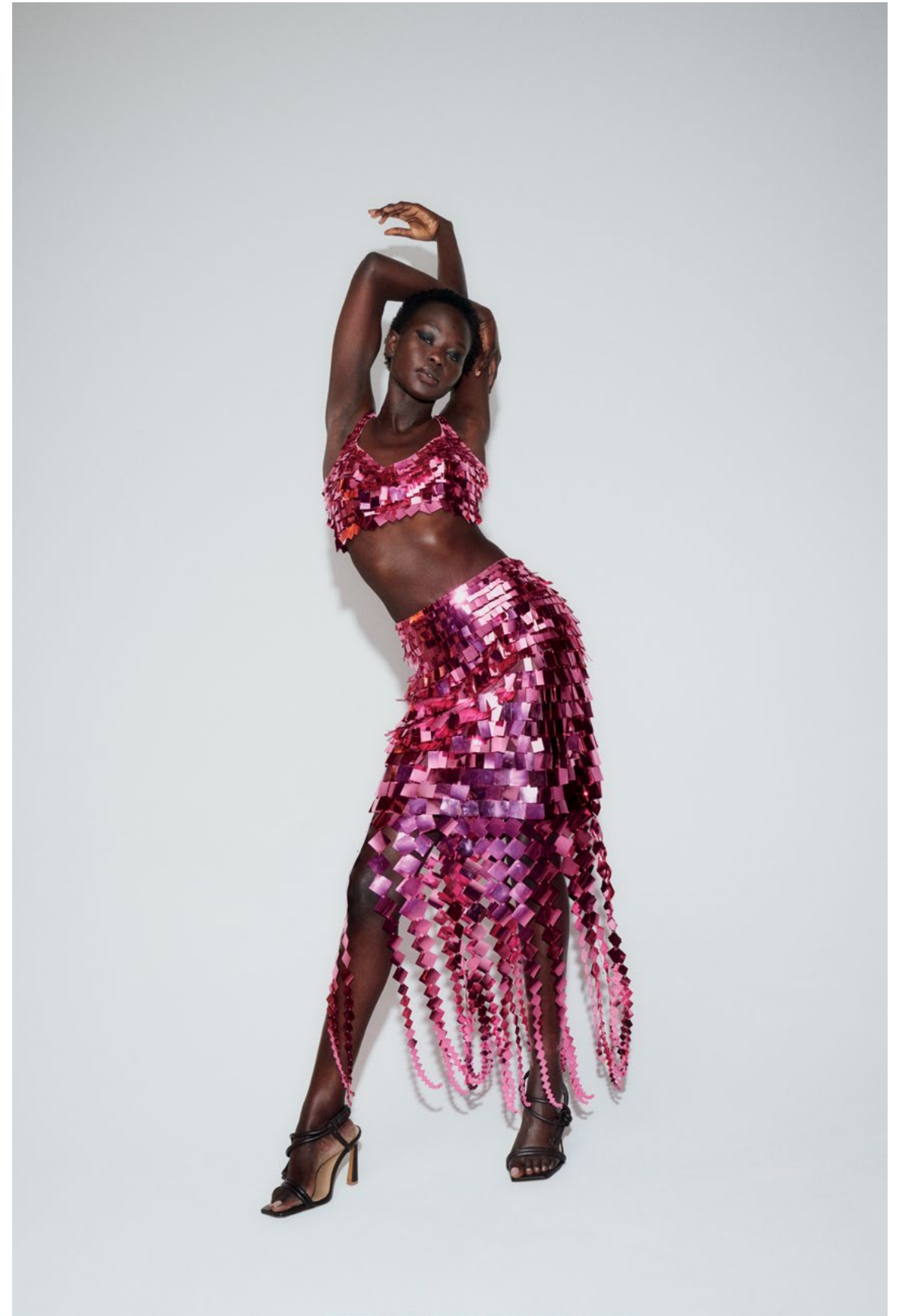


















CREDITS

PHOTOGRAPHY
BRIANNA CAPOZZI

CREATIVE DIRECTION
JONATHAN SIMKHAI
RANA TOOFANIAN

STYLING
ALEXANDRA CARL

FEATURING
LULU TENNEY
DARA ALLEN
AWENG CHUOL

SKINCARE
NOBLE PANACEA

MAKEUP
ZENIA JAEGER

HAIR
HOMA SAFAR

PROP STYLING
PATIENCE HARDING

CONTACT

PRESS@JONATHANSIMKHAI.COM
SALES@JONATHANSIMKHAI.COM

@JONATHANSIMKHAI

WWW.JONATHANSIMKHAI.COM