
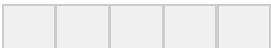

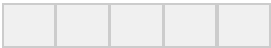

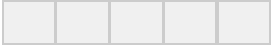

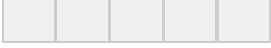


## MAGALI PASCAL

## BLOOM - May/June'22 linesheet

EUR - Euro

## BLOOM - May/June'22 / May'22

REFERENCE	DESCRIPTION	WHOLESALE (EUR)	SUGG. RETAIL (EUR)
	ELAINNE SHIRT		
	Collection: BLOOM - May/June'22 Print/fabric: 70% COTTON 30% SILK		
Variant	XS S M L XL		
VINTAGE BLOOM LIGHT		101.85	275
Ref. MPPF22T01-1			
COTTON SILK DOBBY			
	ELAINNE SHIRT		
	Collection: BLOOM - May/June'22 Print/fabric: 70% COTTON 30% SILK		
Variant	XS S M L XL		
VINTAGE BLOOM DARK		101.85	275
Ref. MPPF22T02-1			
COTTON SILK DOBBY			
	JOYCE TOP		
	Collection: BLOOM - May/June'22 Print/fabric: 70% COTTON 30% SILK		
Variant	XS S M L XL		
VINTAGE BLOOM LIGHT		101.85	275
Ref. MPPF22T27-1			
COTTON SILK DOBBY			
	SOPHIA SHIRT		
	Collection: BLOOM - May/June'22 Print/fabric: 100% COTTON		
Variant	XS S M L XL		
WHITE CHECK		101.85	275
Ref. MPPF22T11-1			
COTTON DOBBY			



#### DAISY SHIRT

Collection: BLOOM - May/June'22  
Print/fabric: 50% COTTON 50% RAYON

Variant	XS	S	M	L	XL		
 <b>CLOUD GREY</b> Ref. MPPF22T13-1 COTTON RAYON DOBBY						87.04	235



#### DAISY SHIRT

Collection: BLOOM - May/June'22  
Print/fabric: 50% COTTON 50% RAYON

Variant	XS	S	M	L	XL		
 <b>BLUSH</b> Ref. MPPF22T14-1 COTTON RAYON DOBBY						87.04	235



#### JOSLIN SHIRT

Collection: BLOOM - May/June'22  
Print/fabric: 100% ORGANIC COTTON

Variant	XS	S	M	L	XL		
 <b>OFF WHITE</b> Ref. MPPF22T15-1 ORGANIC POPLIN						77.78	210



#### JOSLIN SHIRT


Collection: BLOOM - May/June'22  
Print/fabric: 100% ORGANIC COTTON

Variant	XS	S	M	L	XL		
 <b>POWDER PINK</b> Ref. MPPF22T16-1 ORGANIC POPLIN						77.78	210



#### VALERIA TOP

Collection: BLOOM - May/June'22  
Print/fabric: 50% COTTON 50% RAYON

Variant	XS	S	M	L	XL		
 <b>CLOUD GREY</b> Ref. MPPF22T18-1 COTTON RAYON DOBBY						77.78	210



#### VALERIA TOP

Collection: BLOOM - May/June'22  
Print/fabric: 50% COTTON 50% RAYON

Variant	XS	S	M	L	XL		
 <b>BLUSH</b> Ref. MPPF22T19-1 COTTON RAYON DOBBY						77.78	210

**LOTTIE TOP**

Collection: BLOOM - May/June'22  
Print/fabric: 70% COTTON 30% SILK

Variant	XS	S	M	L	XL		
 <b>BLACK</b> Ref. MPPF22T04-1 COTTON SILK DOBBY						92.59	250

**LOTTIE TOP**

Collection: BLOOM - May/June'22  
Print/fabric: 70% COTTON 30% SILK

Variant	XS	S	M	L	XL		
 <b>IVORY</b> Ref. MPPF22T29-1 COTTON SILK DOBBY						92.59	250

**JANIS JEANS**

Collection: BLOOM - May/June'22  
Print/fabric: 100% COTTON

Variant	XS	S	M	L	XL		
 <b>ECRU</b> Ref. MPPF22P03-1 DENIM						101.85	275

**JANIS JEANS**

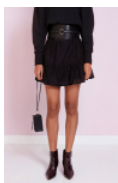
Collection: BLOOM - May/June'22  
Print/fabric: 100% COTTON

Variant	XS	S	M	L	XL		
 <b>LIGHT BLUE</b> Ref. MPPF22P04-1 DENIM						101.85	275

**MAGGIE SKIRT**

Collection: BLOOM - May/June'22  
Print/fabric: 70% COTTON 30% SILK

Variant	XS	S	M	L	XL		
<b>VINTAGE BLOOM LIGHT</b> Ref. MPPF22SK03-1 COTTON SILK DOBBY						101.85	275

**MAGGIE SKIRT**

Collection: BLOOM - May/June'22  
Print/fabric: 70% COTTON 30% SILK

Variant	XS	S	M	L	XL		
 <b>BLACK</b> Ref. MPPF22SK05-1 COTTON SILK DOBBY						92.59	250



#### JANIS SKIRT

Collection: BLOOM - May/June'22  
Print/fabric: 100% COTTON

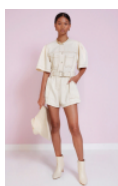
Variant	XS	S	M	L	XL		
 <b>ECRU</b> Ref. MPPF22SK01-1 DENIM						79.63	215



#### JANIS SKIRT

Collection: BLOOM - May/June'22  
Print/fabric: 100% COTTON

Variant	XS	S	M	L	XL		
 <b>LIGHT BLUE</b> Ref. MPPF22SK02-1 DENIM						79.63	215



#### MILU JUMPSUIT

Collection: BLOOM - May/June'22  
Print/fabric: 100% COTTON

Variant	XS	S	M	L	XL		
 <b>ECRU</b> Ref. MPPF22C01-1 DENIM						133.33	360



#### MILU JUMPSUIT

Collection: BLOOM - May/June'22  
Print/fabric: 100% COTTON

Variant	XS	S	M	L	XL		
 <b>LIGHT BLUE</b> Ref. MPPF22C02-1 DENIM						133.33	360



#### DAISY JUMPSUIT

Collection: BLOOM - May/June'22  
Print/fabric: 50% COTTON 50% RAYON

Variant	XS	S	M	L	XL		
 <b>BLUSH</b> Ref. MPPF22C03-1 COTTON RAYON DOBBY						109.26	295



#### DAISY JUMPSUIT

Collection: BLOOM - May/June'22  
Print/fabric: 50% COTTON 50% RAYON

Variant	XS	S	M	L	XL		
 <b>OFF BLACK</b> Ref. MPPF22C04-1 COTTON RAYON DOBBY						109.26	295



#### MAGGIE DRESS

Collection: BLOOM - May/June'22  
Print/fabric: 70% COTTON 30% SILK

Variant	XS	S	M	L	XL		
VINTAGE BLOOM LIGHT Ref. MPPF22D03-1 COTTON SILK DOBBY						150	405



#### MAGGIE DRESS

Collection: BLOOM - May/June'22  
Print/fabric: 70% COTTON 30% SILK

Variant	XS	S	M	L	XL		
VINTAGE BLOOM DARK Ref. MPPF22D04-1 COTTON SILK DOBBY						150	405



#### MAGGIE DRESS

Collection: BLOOM - May/June'22  
Print/fabric: 70% COTTON 30% SILK

Variant	XS	S	M	L	XL		
BLACK Ref. MPPF22D05-1 COTTON SILK DOBBY						140.74	380



#### ELAINE DRESS

Collection: BLOOM - May/June'22  
Print/fabric: 70% COTTON 30% SILK

Variant	XS	S	M	L	XL		
VINTAGE BLOOM LIGHT Ref. MPPF22D11-1 COTTON SILK DOBBY						164.81	445



#### ELAINE DRESS

Collection: BLOOM - May/June'22  
Print/fabric: 70% COTTON 30% SILK

Variant	XS	S	M	L	XL		
VINTAGE BLOOM DARK Ref. MPPF22D12-1 COTTON SILK DOBBY						164.81	445



#### MIRIAM MAXI DRESS

Collection: BLOOM - May/June'22  
Print/fabric: 70% COTTON 30% SILK

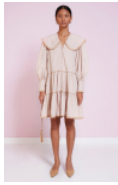
Variant	XS	S	M	L	XL		
VINTAGE BLOOM LIGHT Ref. MPPF22D32-1 COTTON SILK DOBBY						170.37	460



#### JOSLIN DRESS

Collection: BLOOM - May/June'22  
Print/fabric: 100% ORGANIC COTTON

Variant	XS	S	M	L	XL		
 <b>OFF WHITE</b> Ref. MPPF22D16-1 ORGANIC POPLIN						109.26	295



#### JOSLIN DRESS

Collection: BLOOM - May/June'22  
Print/fabric: 100% ORGANIC COTTON

Variant	XS	S	M	L	XL		
 <b>POWDER PINK</b> Ref. MPPF22D17-1 ORGANIC POPLIN						109.26	295



#### SOPHIA MAXI DRESS

Collection: BLOOM - May/June'22  
Print/fabric: 100% COTTON

Variant	XS	S	M	L	XL		
<b>WHITE CHECK</b> Ref. MPPF22D19-1 COTTON DOBBY						133.33	360



#### VALERIA DRESS

Collection: BLOOM - May/June'22  
Print/fabric: 50% COTTON 50% RAYON

Variant	XS	S	M	L	XL		
 <b>BLUSH</b> Ref. MPPF22D30-1 COTTON RAYON DOBBY						92.59	250



#### LOTTIE MAXI DRESS

Collection: BLOOM - May/June'22  
Print/fabric: 70% COTTON 30% SILK

Variant	XS	S	M	L	XL		
 <b>IVORY</b> Ref. MPPF22D02-1 COTTON SILK DOBBY						184.81	499



#### VERITY DRESS

Collection: BLOOM - May/June'22  
Print/fabric: 33% MOHAIR 32% WOOL 25% NYLON

Variant	XS	S	M	L	XL		
 <b>LAVENDER</b> Ref. MPPF22K01-1 WOOL MOHAIR BLEND						155.56	420



### VERITY DRESS

Collection: BLOOM - May/June'22  
Print/fabric: 33% MOHAIR 32% WOOL 25% NYLON

Variant	XS	S	M	L	XL		
 <b>SANDSTONE</b> Ref. MPPF22K02-1 WOOL MOHAIR BLEND						155.56	420



### VERITY PULLOVER

Collection: BLOOM - May/June'22  
Print/fabric: 33% MOHAIR 32% WOOL 25% NYLON

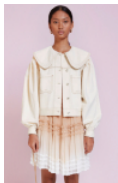
Variant	XS	S	M	L	XL		
 <b>LAVENDER</b> Ref. MPPF22K03-1 WOOL MOHAIR BLEND						124.07	335



### VERITY PULLOVER

Collection: BLOOM - May/June'22  
Print/fabric: 33% MOHAIR 32% WOOL 25% NYLON

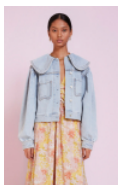
Variant	XS	S	M	L	XL		
 <b>SANDSTONE</b> Ref. MPPF22K04-1 WOOL MOHAIR BLEND						124.07	335



### MILU JACKET

Collection: BLOOM - May/June'22  
Print/fabric: 100% COTTON

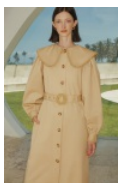
Variant	XS	S	M	L	XL		
 <b>ECRU</b> Ref. MPPF22J03-1 DENIM						124.07	335



### MILU JACKET

Collection: BLOOM - May/June'22  
Print/fabric: 100% COTTON

Variant	XS	S	M	L	XL		
 <b>LIGHT BLUE</b> Ref. MPPF22J04-1 DENIM						124.07	335



### GRACIA TRENCH


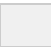
Collection: BLOOM - May/June'22  
Print/fabric: 100% COTTON

Variant	XS	S	M	L	XL		
 <b>BEIGE</b> Ref. MPPF22J07-1 COTTON TWILL						184.81	499



#### GRACIA TRENCH

Collection: BLOOM - May/June'22  
Print/fabric: 100% COTTON

Variant	XS	S	M	L	XL		
 <b>CLOUD GREY</b> Ref. MPPF22J13-1 COTTON TWILL						184.81	499



#### HAROLD JACKET

Collection: BLOOM - May/June'22  
Print/fabric: 90% WOOL 10% POLYESTER

Variant	XS	S	M	L	XL		
 <b>DARK RUST</b> Ref. MPPF22J10-1 WOOL						203.33	549



#### BOBBY JACKET

Collection: BLOOM - May/June'22  
Print/fabric: 80% WOOL 15% COTTON 5%  
POLYESTER

Variant	XS	S	M	L	XL		
 <b>CHECK</b> Ref. MPPF22J09-1 WOOL COTTON BLEND						203.33	549



#### NELSON COAT

Collection: BLOOM - May/June'22  
Print/fabric: 90% WOOL 10% POLYESTER

Variant	XS	S	M	L	XL		
 <b>DARK RUST</b> Ref. MPPF22J08-1 WOOL						250	675



#### GINA BAG

Collection: BLOOM - May/June'22  
Print/fabric: MAIN MATERIAL 1: 100% COTTON; MAIN  
MATERIAL 2: 100% COW LEATHER

Variant	OS		
 <b>BLACK</b> Ref. MPPF22BA01-1 CANVAS & LEATHER		140.74	380



#### GINA BAG

Collection: BLOOM - May/June'22  
Print/fabric: MAIN MATERIAL 1: 100% COTTON; MAIN  
MATERIAL 2: 100% COW LEATHER

Variant	OS		
 <b>BABY PINK</b> Ref. MPPF22BA02-1 TWEED & LEATHER		140.74	380



#### NELLY BAG

Collection: BLOOM - May/June'22  
Print/fabric: 100%COTTON

Variant	OS			
VINTAGE BLOOM LIGHT Ref. MPPF22BA03-1 Twill & LEATHER			101.85	275



#### BARBARA COIN PURSE

Collection: BLOOM - May/June'22  
Print/fabric: 100% COW LEATHER

Variant	OS			
BABY PINK Ref. MPPF22BA04-1 LEATHER			40.74	110



#### BARBARA COIN PURSE

Collection: BLOOM - May/June'22  
Print/fabric: 100% COW LEATHER

Variant	OS			
BLACK Ref. MPPF22BA05-1 LEATHER			40.74	110



#### BARBARA COIN PURSE

Collection: BLOOM - May/June'22  
Print/fabric: 100% COW LEATHER

Variant	OS			
BEIGE Ref. MPPF22BA06-1 LEATHER			40.74	110



#### LOLA CLUTCH

Collection: BLOOM - May/June'22  
Print/fabric: 100% COW LEATHER

Variant	OS			
BLACK Ref. MPPF22BA07-1 LEATHER			55.56	150



#### LOLA CLUTCH

Collection: BLOOM - May/June'22  
Print/fabric: 100% COW LEATHER

Variant	OS			
BABY PINK Ref. MPPF22BA08-1 LEATHER			55.56	150



#### LOLA CLUTCH

Collection: BLOOM - May/June'22  
Print/fabric: 100% COW LEATHER

Variant	OS			
 <b>BEIGE</b> Ref. MPPF22BA09-1 LEATHER			55.56	150



#### CALAMITY BELT

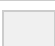
Collection: BLOOM - May/June'22  
Print/fabric: 100% COW LEATHER

Variant	S-M	M-L	L-XL		
 <b>BLACK</b> Ref. MPPF22BE01-1 LEATHER				61.11	165



#### CALAMITY BELT


Collection: BLOOM - May/June'22  
Print/fabric: 100% COW LEATHER

Variant	S-M	M-L	L-XL		
 <b>BROWN</b> Ref. MPPF22BE02-1 LEATHER				61.11	165



#### JAMIE BELT

Collection: BLOOM - May/June'22  
Print/fabric: 100% COW LEATHER

Variant	S-M	M-L	L-XL		
 <b>BLACK</b> Ref. MPPF22BE03-1 LEATHER				61.11	165



#### JAMIE BELT

Collection: BLOOM - May/June'22  
Print/fabric: 100% COW LEATHER

Variant	S-M	M-L	L-XL		
 <b>BEIGE</b> Ref. MPPF22BE04-1 LEATHER				61.11	165



#### JANE BELT

Collection: BLOOM - May/June'22  
Print/fabric: 100% COW LEATHER

Variant	S-M	M-L	L-XL		
 <b>BLACK</b> Ref. MPPF22BE05-1 LEATHER				55.56	150



#### JANE BELT

Collection: BLOOM - May/June'22  
Print/fabric: 100% COW LEATHER

Variant

S-M M-L L-XL

	<b>BROWN</b> Ref. MPPF22BE07-1 LEATHER		55.56	150
---	--	---	-------	-----



#### LUCIE HAT

Collection: BLOOM - May/June'22  
Print/fabric: 100% COTTON

Variant

OS

	<b>IVORY</b> Ref. MPPF22HA01-1 COTTON TWILL		20.37	55
---	---	---	-------	----



#### LUCIE HAT

Collection: BLOOM - May/June'22  
Print/fabric: 100% COTTON

Variant

OS

	<b>VINTAGE BLOOM LIGHT</b> Ref. MPPF22HA02-1 COTTON TWILL		24.07	65
--	---	--	-------	----




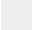
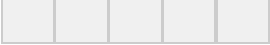


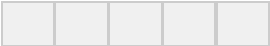


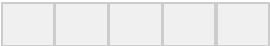


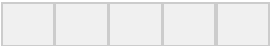


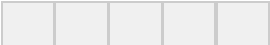
#### LUCIE HAT

Collection: BLOOM - May/June'22  
Print/fabric: 100% COTTON

Variant

OS

	<b>BABY PINK</b> Ref. MPPF22HA03-1 COTTON TWILL		20.37	55
---	---	---	-------	----

REFERENCE	DESCRIPTION	WHOLESALE (EUR)	SUGG. RETAIL (EUR)
	<b>AMAIA DRESS</b>		
	Collection: BLOOM - May/June'22 Print/fabric: 100% VISCOSE		
Variant	XS S M L XL		
 <b>OFF WHITE</b> Ref. MPPF22D33-2 VISCOSE CRINKLE		184.81	499
	<b>IRENE TOP</b>		
	Collection: BLOOM - May/June'22 Print/fabric: 100% COTTON		
Variant	XS S M L XL		
 <b>BLACK</b> Ref. MPPF22T06-2 COTTON POPLIN		118.52	320
	<b>IRENE TOP</b>		
	Collection: BLOOM - May/June'22 Print/fabric: 100% COTTON		
Variant	XS S M L XL		
 <b>OFF WHITE</b> Ref. MPPF22T05-2 COTTON POPLIN		118.52	320
	<b>FRANCIS TOP</b>		
	Collection: BLOOM - May/June'22 Print/fabric: 66% RAYON 34% SILK		
Variant	XS S M L XL		
 <b>ILLUSION</b> Ref. MPPF22T07-2 SILK RAYON CREPE		109.26	295
	<b>FRANCIS TOP</b>		
	Collection: BLOOM - May/June'22 Print/fabric: 66% RAYON 34% SILK		
Variant	XS S M L XL		
 <b>OFF BLACK</b> Ref. MPPF22T08-2 SILK RAYON CREPE		101.85	275



### FRANCIS TOP

Collection: BLOOM - May/June'22  
Print/fabric: 66% RAYON 34% SILK

Variant	XS	S	M	L	XL		
 <b>BERRY</b> Ref. MPPF22T09-2 SILK RAYON CREPE						101.85	275



### NICOLA SWEATER

Collection: BLOOM - May/June'22  
Print/fabric: 100% ORGANIC COTTON

Variant	XS	S	M	L	XL		
 <b>LAVENDER</b> Ref. MPPF22T21 -2 ORGANIC COTTON TERRY						77.78	210



### NICOLA SWEATER

Collection: BLOOM - May/June'22  
Print/fabric: 100% ORGANIC COTTON

Variant	XS	S	M	L	XL		
 <b>PEACH</b> Ref. MPPF22T22-2 ORGANIC COTTON TERRY						77.78	210



### DAISY SHIRT

Collection: BLOOM - May/June'22  
Print/fabric: 60% COTTON 40% SILK

Variant	XS	S	M	L	XL		
 <b>BLUE STRIPE</b> Ref. MPPF22T12-2 SILK COTTON VOILE						92.59	250



### VALERIA TOP

Collection: BLOOM - May/June'22  
Print/fabric: 60% COTTON 40% SILK

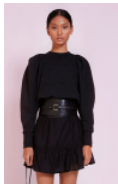
Variant	XS	S	M	L	XL		
 <b>BLUE STRIPE</b> Ref. MPPF22T17-2 SILK COTTON VOILE						87.04	235



### CAMELIA T-SHIRT

Collection: BLOOM - May/June'22  
Print/fabric: 100% ORGANIC COTTON

Variant	XS	S	M	L	XL		
 <b>SUNSET PEACH</b> Ref. MPPF22T25-2 ORGANIC JERSEY						61.11	165



#### NICOLA SWEATER

Collection: BLOOM - May/June'22  
Print/fabric: 100% ORGANIC COTTON

Variant	XS	S	M	L	XL		
 <b>BLACK</b> Ref. MPPF22T23 -2 ORGANIC COTTON TERRY						77.78	210



#### CAMELIA T-SHIRT

Collection: BLOOM - May/June'22  
Print/fabric: 100% ORGANIC COTTON

Variant	XS	S	M	L	XL		
 <b>BLACK</b> Ref. MPPF22T26-2 ORGANIC JERSEY						61.11	165



#### CAMELIA T-SHIRT

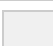
Collection: BLOOM - May/June'22  
Print/fabric: 100% ORGANIC COTTON

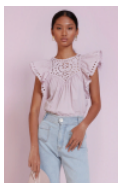
Variant	XS	S	M	L	XL		
 <b>OFF WHITE</b> Ref. MPPF22T30-2 ORGANIC JERSEY						55.56	150



#### LILIA TOP

Collection: BLOOM - May/June'22  
Print/fabric: 100% COTTON

Variant	XS	S	M	L	XL		
 <b>OFF WHITE</b> Ref. MPPF22T20-2 COTTON POPLIN						109.26	295



#### LILIA TOP

Collection: BLOOM - May/June'22  
Print/fabric: 100% COTTON

Variant	XS	S	M	L	XL		
 <b>LILAC</b> Ref. MPPF22T28-2 COTTON POPLIN						109.26	295



#### ADRIENNE SHORTS

Collection: BLOOM - May/June'22  
Print/fabric: 100% COTTON

Variant	XS	S	M	L	XL		
 <b>LIGHT BLUE</b> Ref. MPPF22S01-2 DENIM						87.04	235



#### ADRIENNE SHORTS

Collection: BLOOM - May/June'22  
Print/fabric: 100% COTTON

Variant	XS	S	M	L	XL		
 <b>CARNATION</b> Ref. MPPF22S02-2 DENIM						87.04	235



#### LAURENT SHORTS

Collection: BLOOM - May/June'22  
Print/fabric: 100% POLYURETHANE

Variant	XS	S	M	L	XL		
 <b>SESAME</b> Ref. MPPF22S03-2 VEGAN LEATHER						109.26	295



#### LAURENT SHORTS

Collection: BLOOM - May/June'22  
Print/fabric: 100% POLYURETHANE

Variant	XS	S	M	L	XL		
 <b>OFF BLACK</b> Ref. MPPF22S04-2 VEGAN LEATHER						109.26	295



#### ADRIENNE JEANS

Collection: BLOOM - May/June'22  
Print/fabric: 100% COTTON

Variant	XS	S	M	L	XL		
 <b>LIGHT BLUE</b> Ref. MPPF22P01-2 DENIM						101.85	275



#### ADRIENNE JEANS

Collection: BLOOM - May/June'22  
Print/fabric: 100% COTTON

Variant	XS	S	M	L	XL		
 <b>CARNATION</b> Ref. MPPF22P02-2 DENIM						101.85	275



#### LAURENT PANTS

Collection: BLOOM - May/June'22  
Print/fabric: 100% POLYURETHANE

Variant	XS	S	M	L	XL		
 <b>SESAME</b> Ref. MPPF22P05-2 VEGAN LEATHER						140.74	380

**LAURENT PANTS**

Collection: BLOOM - May/June'22  
 Print/fabric: 100% POLYURETHANE

Variant	XS	S	M	L	XL		
<b>OFF BLACK</b> Ref. MPPF22P06-2 VEGAN LEATHER						140.74	380

**ANDY PANTS**

Collection: BLOOM - May/June'22  
 Print/fabric: 55% LINEN 45% COTTON

Variant	XS	S	M	L	XL		
<b>LAVENDER</b> Ref. MPPF22P07-2 LINEN HERRINGBONE						118.52	320

**ANDY PANTS**

Collection: BLOOM - May/June'22  
 Print/fabric: 55% LINEN 45% COTTON

Variant	XS	S	M	L	XL		
<b>GRAPHITE</b> Ref. MPPF22P08-2 LINEN HERRINGBONE						118.52	320

**FRANCIS DRESS**

Collection: BLOOM - May/June'22  
 Print/fabric: 66% RAYON 34% SILK

Variant	XS	S	M	L	XL		
<b>ILLUSION</b> Ref. MPPF22D13-2 SILK RAYON CREPE						170.37	460

**FRANCIS DRESS**

Collection: BLOOM - May/June'22  
 Print/fabric: 66% RAYON 34% SILK

Variant	XS	S	M	L	XL		
<b>OFF BLACK</b> Ref. MPPF22D14-2 SILK RAYON CREPE						155.56	420

**FRANCIS DRESS**


Collection: BLOOM - May/June'22  
 Print/fabric: 66% RAYON 34% SILK

Variant	XS	S	M	L	XL		
<b>BERRY</b> Ref. MPPF22D15-2 SILK RAYON CREPE						155.56	420



#### JILLIAN MAXI DRESS

Collection: BLOOM - May/June'22  
Print/fabric: 66% RAYON 34% SILK

Variant	XS	S	M	L	XL		
 <b>OFF BLACK</b> Ref. MPPF22D20-2 SILK RAYON CREPE						170.37	460



#### JILLIAN MAXI DRESS

Collection: BLOOM - May/June'22  
Print/fabric: 66% RAYON 34% SILK

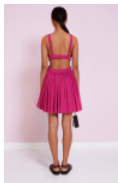
Variant	XS	S	M	L	XL		
 <b>BERRY</b> Ref. MPPF22D21-2 SILK RAYON CREPE						170.37	460



#### JILLIAN DRESS

Collection: BLOOM - May/June'22  
Print/fabric: 66% RAYON 34% SILK

Variant	XS	S	M	L	XL		
 <b>OFF BLACK</b> Ref. MPPF22D23-2 SILK RAYON CREPE						133.33	360



#### JILLIAN DRESS

Collection: BLOOM - May/June'22  
Print/fabric: 66% RAYON 34% SILK

Variant	XS	S	M	L	XL		
 <b>BERRY</b> Ref. MPPF22D24-2 SILK RAYON CREPE						133.33	360



#### AMAIA DRESS

Collection: BLOOM - May/June'22  
Print/fabric: 100% VISCOSE

Variant	XS	S	M	L	XL		
 <b>SUNSET PEACH</b> Ref. MPPF22D25-2 VISCOSE CRINKLE						184.81	499



#### AMAIA DRESS

Collection: BLOOM - May/June'22  
Print/fabric: 100% VISCOSE

Variant	XS	S	M	L	XL		
 <b>SUNRISE PURPLE</b> Ref. MPPF22D26-2 VISCOSE CRINKLE						184.81	499



### VIOLA DRESS

Collection: BLOOM - May/June'22  
Print/fabric: 100% VISCOSE

Variant	XS	S	M	L	XL		
 <b>SUNSET PEACH</b> Ref. MPPF22D28-2 VISCOSE CRINKLE						266.67	720



### VALERIA DRESS

Collection: BLOOM - May/June'22  
Print/fabric: 60% COTTON 40% SILK

Variant	XS	S	M	L	XL		
 <b>BLUE STRIPE</b> Ref. MPPF22D29-2 SILK COTTON VOILE						109.26	295



### ANTONIA DRESS

Collection: BLOOM - May/June'22  
Print/fabric: 60% COTTON 40% SILK

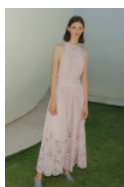
Variant	XS	S	M	L	XL		
 <b>BLUE STRIPE</b> Ref. MPPF22D31-2 SILK COTTON VOILE						150	405



### LILIA DRESS

Collection: BLOOM - May/June'22  
Print/fabric: 100% COTTON

Variant	XS	S	M	L	XL		
 <b>OFF WHITE</b> Ref. MPPF22D22-2 COTTON POPLIN						184.81	499



### LILIA DRESS

Collection: BLOOM - May/June'22  
Print/fabric: 100% COTTON

Variant	XS	S	M	L	XL		
 <b>LILAC</b> Ref. MPPF22D27-2 COTTON POPLIN						184.81	499



### IRENE SKIRT

Collection: BLOOM - May/June'22  
Print/fabric: 100% COTTON

Variant	XS	S	M	L	XL		
 <b>BLACK</b> Ref. MPPF22SK06-2 COTTON POPLIN						133.33	360



#### IRENE SKIRT

Collection: BLOOM - May/June'22  
Print/fabric: 100% COTTON

Variant	XS	S	M	L	XL		
 <b>OFF WHITE</b> Ref. MPPF22SK07-2 COTTON POPLIN						133.33	360



#### LEA SWEATER


Collection: BLOOM - May/June'22  
Print/fabric: 65% CASHMERE 35% MOHAIR

Variant	XS	S	M	L	XL		
 <b>ECRU</b> Ref. MPPF22K05-2 CASHMERE MOHAIR						155.56	420



#### LEA SWEATER

Collection: BLOOM - May/June'22  
Print/fabric: 65% CASHMERE 35% MOHAIR

Variant	XS	S	M	L	XL		
 <b>FUCHSIA</b> Ref. MPPF22K06-2 CASHMERE MOHAIR						155.56	420



#### LEA VEST

Collection: BLOOM - May/June'22  
Print/fabric: 65% CASHMERE 35% MOHAIR

Variant	XS/S	M/L		
 <b>ECRU</b> Ref. MPPF22K07-2 CASHMERE MOHAIR			101.85	275



#### LEA VEST

Collection: BLOOM - May/June'22  
Print/fabric: 65% CASHMERE 35% MOHAIR

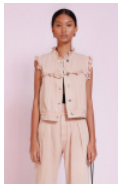
Variant	XS/S	M/L		
 <b>FUCHSIA</b> Ref. MPPF22K08-2 CASHMERE MOHAIR			101.85	275



#### CHARLY JACKET

Collection: BLOOM - May/June'22  
Print/fabric: 100% COTTON

Variant	XS	S	M	L	XL		
 <b>LIGHT BLUE</b> Ref. MPPF22J01-2 DENIM						101.85	275



## CHARLY JACKET

Collection: BLOOM - May/June'22  
Print/fabric: 100% COTTON

Variant	XS	S	M	L	XL		
 <b>CARNATION</b> Ref. MPPF22J02-2 DENIM						101.85	275



## ANDY BLAZER

Collection: BLOOM - May/June'22  
Print/fabric: 55% LINEN 45% COTTON

Variant	XS	S	M	L	XL		
 <b>LAVENDER</b> Ref. MPPF22J11-2 LINEN HERRINGBONE						155.56	420



## ANDY BLAZER

Collection: BLOOM - May/June'22  
Print/fabric: 55% LINEN 45% COTTON

Variant	XS	S	M	L	XL		
 <b>GRAPHITE</b> Ref. MPPF22J12-2 LINEN HERRINGBONE						155.56	420

## TERMS OF SALE

Legal note : reverse charge IC delivery -- Art 138 EU Directive 2006/112

### Definition of Terms

In these terms:

1. "Supplier" means GIRLS IN PARIS LIMITED
2. "Sales Order" means the agreement evidenced sales and purchase of Goods;
3. "Goods" means the goods ordered by the Purchaser;
4. "Price" means the total amount payable for the Goods as detailed in the Invoice.
5. "Customer", "You", "Your" means the individual; partnership or company in whose name this order has been made out.

### The Agreement

The Supplier agrees to supply the Goods and the Customer agrees to purchase the Goods on these Terms.

### Payment

Unless otherwise agreed by the Supplier in writing, the Customer must pay the Price without deduction in accordance with the payment terms detailed in the Sales Order/Invoice.  
All invoices are to be paid by:

5.1 direct deposit;

5.2 PayPal; or

5.3 credit card (VISA or MasterCard).

If payment of the Invoice by the Customer is made by PayPal or credit card, the Supplier may charge the Customer a transaction fee of 3% of the Price.

If the Customer fails to pay any invoice by the Due Date, the Supplier reserves the right thereafter to suspend or terminate the delivery or any future orders.

Interest is payable on all accounts overdue by more than 30 days at a rate of 5% p.a.

The Customer is liable for freight costs in addition to the Price, unless agreed on writing.

If payment of the Price is not made by the Customer in accordance with these Terms, the Customer acknowledges that the Supplier has the right (without prejudice to any other rights and remedies it may have) to recover, remove and/or resell the Goods. For that purpose, the Supplier's employees, agents or workers may without notice enter any place the Supplier believes the Goods to be without committing a trespass.

In the event of non-payment of the Price in accordance with these Terms, the Customer will pay all reasonable collection expenses, legal costs and any other expenses incurred by the Supplier in connection with the non-payment.

The Supplier will have no obligation to make good any damage caused by such recovery or removal and the Supplier will not be liable for and the Customer indemnify the Supplier against any costs, claims, damages or losses suffered by the Customer as a result of such removal.

The Supplier will provide a recommended retail price for each purchased goods.

### Title and Risk

In relation to all Goods:

1. Title in the Goods will not pass to the Customer until the Price is paid in full;
2. Risk in the Goods will pass to the Customer immediately upon delivery to or collection of the Goods;
3. Until the Supplier receives full payment of the Price, the Supplier has the right to recover, remove and/or resell the Goods free from any claims by the Customer.

### Delivery

The Supplier shall use its reasonable endeavors to deliver the Goods to the Purchaser on or between the Delivery Commencement Date and the Delivery Completion Date set out. However, delivery dates are estimated, and late delivery will not be accepted as a reason for a cancellation of an order.

#### Acceptance

The Supplier will notify the Purchaser once the goods is ready to be delivered. The Purchaser has 7 days confirm and/or organize all that necessary to receive the goods. Otherwise, a warehousing fee will be charged. Rejection of the Goods must be notified to the Company prior to their return in written form. Goods rejected will not absolve the Purchaser from payment of Goods not returned.

#### Cancellation & Returned Goods

##### Cancelling Orders:

1. The Customer cannot at any time cancel the whole or part of any order placed without the Company's prior approval.
2. All orders cancelled by the Customer will be charged a 50% cancellation fee on all cancelled orders.
3. If the Customer's account is overdue by more than 60 days, the Supplier can cancel any held and future orders at the supplier's discretion and charge the 50% cancellation fee.
4. Any deposit paid by Customer is not refundable.

The customer will inspect the Goods upon delivery and advise the Supplier in writing within 14 days of its receipt of the Goods of any fault with the Goods.

To the extent permitted by law;

1. Any claim made by the Customer in respect of the Goods may only be made within 14 days of the Customer's receipt of the Goods ("Return Period")
2. After the lapse of the Return Period, the Supplier will not accept the return of the Goods for any reason whatsoever.

Any Goods requiring return by the Customer to the Supplier within the Return Period must have an authorization number (provided by the Supplier) clearly displayed on the returned package along with the original Invoice number.

All returns must be returned by the Supplier's selected carrier or the returned Goods will automatically be returned at the Customer's expense.

An authorization number does not in any way translate into an automatic credit on the Customer's account.

When the Supplier receives the returned Goods, the Goods will be inspected and one of the following will occur;

1. In the event that the Goods are repairable (i.e. replacement of zip or stitching), the Supplier will repair the Goods and return the Goods to the Customer; or if the Goods are not repairable (i.e. flaw in the fabric), the Supplier will endeavor to replace the Goods in the same size, color and styles, which will then be returned to the Customer; or
2. If the Goods are faulty and cannot be replaced, the Customer will be issued with a credit note for the Goods; and
3. A credit note that is authorized by the Supplier will then be passed onto the accounts department of the Supplier and the credit will be applied to the next invoice issued.

#### GOVERNING LAW

These Terms are to be governed and interpreted in accordance with the laws of Hongkong.